



D0 Tgxkgy 'O qpkqtkpi 'Tgr qtv'  
D/3'Dk/Cppwcn 'Gz gewkxg'Nko kvkqpu.'Guugpvkn'Unknu"  
D/4'Cppwcn'Gpf u.'Y qtnhtqteg'F gxgnr o gpv'  
E0 Dqctf 'Rtqeguu'cpf 'Rqrk { 'I qxgtpcpeg'Tgxkgy ""

IV. OTHER:

C0 kpek gpven'kphqto cvkqp( i 067"  
D0 Tgr qtv'htqo 'Hkppg{ 'Eqwv{ 'Geqpqo ke'F gxgnr o gpv'Eqtr qtcvkq ""  
E0 Tgr qtv'htqo 'MCEEV"  
F0 Tgr qtv'qp'J NE "

V. OWNERSHIP LINKAGE:

Upcoming Calendar Dates:

P qxgo dgt'3/5" " " Rrc{.'oCmpg<"Vj g'O kpf "qh'Gf i ct'Cmgn'Rqgö.'Hkpg'Ct w'Cwf kvtkwo .'9<52'r 0 0'  
P qxgo dgt'6" " " Rrc{.'oCmpg<"Vj g'O kpf "qh'Gf i ct'Cmgn'Rqgö.'Hkpg'Ct w'Cwf kvtkwo .'4<52'r 0 0'  
P qxgo dgt'37" " " Gzr rqtcvkqpl'F kaeqxt { 'F c{ "  
P qxgo dgt'3;/45"" " Vj cpni kxkpi 'dtgcm'pq'ercuugu.'qhhegu'erqugf "  
F gego dgt'39/Lcpwct { '3.'423; " Ej tkwo cu'dtgcm'pq'ercuugu.'qhhegu'erqugf "  
Lcpwct { '4" " " Eco r wu'tgqr gpu"

VI. EXECUTIVE SESSION

VII. ADJOURNMENT

---

Ugxxg'O ctvkpg| " " " " " " T { cp'Twf c"  
Ej ckto cp" " " " " " " Cevkpi 'kvgtko 'Rtgukf gpv'

**Mission:** *Garden City Community College exists to produce positive contributors to the economic and social well-being of society.*

**Five Ends:** *Essential Skills, Work Preparedness, Academic Advancement, Personal Enrichment, Workforce Development.*

Purposes for Executive Sessions

- a. *Personnel matters of non-elected personnel*
- b. *Consultation with the body's attorney*
- c. *Employer-employee negotiation*
- d. *Confidential data relating to financial affairs or trade secrets of corporations, partnerships, trusts, and individual proprietorship*
- e. *Matters affecting a student, patient, or resident of public institutions*
- f. *Preliminary discussions relating to acquisition of real property*
- g. *Security, if open discussion would jeopardize security*

**MEETING OF TRUSTEES  
GARDEN CITY COMMUNITY COLLEGE  
September 11, 2018**

Trustees Present: Jeff Crist, Dr. Marilyn Douglass, Leonard Hitz, Steve Martinez, Blake Wasinger, Terri Worf

Others Present: Craig Atkinson, National American University  
Debra Atkinson, Deputy Clerk  
Eugene Atkinson, Community Member  
Maxine Atkinson, Community Member  
Colton Bartlett, SGA, Treasurer  
Robin Bergkamp, Community Member  
Holly Chandler, Reading Instructor  
Liset Cruz, Community Member  
Nicole Dick, Math Instructor  
Jesus Dioz, Community Member  
Mark Douglass, Community Member  
Toni Douglass, Community Member  
Rodney Dozier, GCCC Chief of Police  
Jeannie Ferguson, ESL Instructor  
Adriana Figueroa, Community Member  
Dr. Glendon Forgey, Vice President for Business Affairs  
Amber Friend, *Garden City Telegram*  
Xocruilt Gough, Community Member  
Randy Grisell, Attorney for Garden City Community College  
Joanne Hamilton, Community Member  
Kevin Hamilton, Community Member  
Josh Harbour, *Garden City Telegram*  
Sheena Hernandez, English Instructor  
Phil Hoke, Drama Instructor/Faculty Senate  
Jim Howard, Community Member  
William Howell, Admission Representative  
Tammy Hutcheson, Social Science Instructor  
Clara Jackson, SGA President  
Jimmy Lee Joseph, Head Cross Country/Track and Field Coach  
Aaron Kucharik, Community Member  
Gary Kuenstler, Criminal Justice Instructor  
Daniel Kyinakwa, Chemistry Instructor  
Colin Lamb, Dean of Student Services  
Winsom Lamb, Social Science Instructor  
Barbara Larson, Community Member  
Bob Larson, Community Member  
Robert Lewis, Attorney  
Craig Lurtz, Transportation Coordinator  
Jailene Mendoza, SGA, Vice President  
Roberto Mendoza, Community Member  
Jacquelyn Messinger, Dean of Institutional Effectiveness, Research, and Planning  
Elaine Morales, Community Member  
Cortney Morris, English Instructor  
Abby Murrell, SGA, Secretary  
Kathy Nance, Community Member  
Mark Nance, Community Member

Deb Nicholson, GCCC Comptroller  
Kimbery Ochoa, Community Member  
Chuck Pfeifer, Dean of Workforce Technology  
Derek Ramos, Director of Facilities  
Sammie Ramos, Community Member  
Robert Ramero, Community Member  
Emily Robles, SGA, Public Relations  
Lauren Rockhold, Coordinator-Student Activities/SGA Advisor  
Pedro Rodriguez, Community Member  
Ryan Ruda, Vice President for Instruction/Student Services  
David Rupp, Community Member  
Samantha Sanger, English Instructor  
Danny Spurgeon, Converge One  
Jeff Southern, Director-Institutional Research / Special Projects  
Tammy Tabor, Director Enrollment Management  
Phil Terpstra, Dean of Academics  
Sylvia Trevino, Community Member  
Nancy Unruh, GCCC Registrar  
Janice Urie, Coordinator for Tutoring  
Susan Waller, Community Member

**CALL TO ORDER:**

Chair Martinez called the regular board meeting to order at 6:00 p.m.

**INTRODUCTION OF NEW EMPLOYEES:**

Phil Terpstra, Dean of Academics, introduced new employees Courtney Morris, English Instructor, and Daniel Kyinakwa, Chemistry Instructor. Colin Lamb, Dean of Student Services, introduced new employees William Howell, Admissions Representative and Jimmy Joseph, Head Cross Country Coach. Chuck Pfeifer, Dean of Technical Education and Workforce introduced Gary Kuenstler, Criminal Justice Instructor.

Interim President Ruda welcomed the new GCCC employees and presented each with a GCCC Broncbuster lapel pin.

**OPEN COMMENTS FROM THE PUBLIC:**

Chair Martinez noted that three individuals had signed up to comment. Community members expressed their opinions regarding GCCC Board of Trustees, Presidential search, and upcoming state elections.

Chair Martinez thanked all for sharing their comments.

**EXECUTIVE SESSION:**

**Motion:**

*Douglass moved, seconded by Wasinger to go into executive session for thirty (30) minutes, for the purpose of Board of Trustees discussion on personnel matters of non-elected personnel which if discussed in open meeting might violate their right to privacy, specifically confidential employee information, allowing five (5) minutes to clear the room. The open meeting will resume in the Endowment Room of the Beth Tedrow Student Center in thirty (30) minutes, (6:45 p.m.). Included in the executive session will be Trustees, and Attorney for Garden City Community College Board of Trustees, Randall Grisell.*

**Ayes:** Crist, Douglass, Hitz, Martinez, Wasinger, Worf

**Nays:** None

**Motion carried: 6-0**

**Included in Executive Session:**

I EEE "Dqctf "qh"Vtwuvggu"  
Tcpf cmlI tkugm "C wqtpg { "hqt "I ctf gp "Ek { "Eqo o wpk { "Eqmgi g "Dqctf "qh"Vtwuvggu"  
"  
Dqctf "tgeqpxgpgf "kpv "qr gp "ugukqp "cv8-67"r 0"

**Motion:"**

*Douglass moved, seconded by Wasinger to approve Ryan Ruda as the Interim President until Garden City Community College Board of Trustees can conduct a national search to fill the Presidential Position, as outlined in a contract presented by Garden City Community College Board of Trustees attorney, Randy Grisell.*

**Ayes:** Crist, Douglass, Hitz, Martinez, Wasinger, Worf

**Nays:** None

**Motion carried 6-0**

**REPORT FROM STUDENT GOVERNMENT ASSOCIATION:**

Emtc "Lcemuq. "UI C "Rtgukf gpv "kpv tqf wegf "UI C "qh "hlegtu "cpf "i cxg "y g "hktuv tgr qtv "qh "y g " { gct0 ""

- Lcemuq "tgr qtv gf "y cv "UI C "j cu "dggp "y qtnkpi "v "eqo r rvgv "y g "o "Dkng "F gr qv "r tq lge "Vj tqwi j "c "i tcpv "htqo " I ctf gp "Ek { "Uj g tkhu "F gr ctvo gpv "hkg "dkgu "cpf "j gro gu "j cxg "dggp "r wtej cugf "hqt "y g "I ctf gp "Ek { "Eqo o wpk { "Eqmgi g "Uwf gpvI qxgtpo gpv "Cuqekv kpa "o "Dkng "F gr qv "Vj ku "kppqxcvg "gpf gcxqt "y kni t qxkf g "vcpur qt cvkqp "hqt "uww gpw "y kj qw "ectu0 ""Lcemuq "r tgu gpvf "Vtwuvggu "y kj "gzco r ngu "qh "ceekf gpv "y ckxgt. " ej genlqw "uj ggu "cpf "dkng "tcmi "y cv "UI C "y qwf "rkng "v "r wtej cug0 ""
- UI C "r ctv gtf "y kj "Hkppg { "Eqwv { "NkxgY gm "v "r tqo qvg "Y qtrf "Uwkef g "Rtgxgpv kpa "F c { "cpf "Ugr vgo dgt " cu "Uwkef g "Cy ctgpguu "O qpj "qp "O qpf c { . "Ugr vgo dgt "32. "423: 0 "V/uj ktu "y gtg "uqrf "v "tckug "o qp { "hqt " Uqwj y guv "Mcpucu "Uwkef g "Cy ctgpguu "Cmkpeg. "k "cf f kkp "uww gpw "wugf "ukem { "pqvu "v "y tkng " gpeqwtci kpi "y qwi j w "cpf "r quvgf "y go "qp "y g "Uchgm "Nkdtct { "y kpf qy 0 "I wguv "ur gcngt "ugtgu "dgi cp "cv8-52" r 0 "Ur gcngtu "uj ctgf "xcnwdrg "kphqto cvkqp "v "j gki j vgp "cy ctgpguu "cdqw "v ku "ko r qt cvpv "uwdlge0 ""
- UI C "j quvgf "y g "eco r wu"; B3 "Tgo go dtcpeg "F c { "hqt "uww gpw. "hcew { . "uchh "cpf "eqo o wpk { "o go dgtu0 " mcechktuv tgr qpf gtu "cpf "o go dgtu "qh "y g "P cvkqpcnI wctf "y gtg "k "cwgpf cpeg0
- UI C "y kni quv "Eqpuvkwkpa "F c { "qp "Ugr vgo dgt "39. "cuukv { "d { "y g "Ngci wg "qh "Y qo gp "Xqvgtu0 "Uwf gpw " y kni "cnuq "dg "r tgu gpvf "y kj "y g "qr r qt wpk { "v "tgi kvgt "v "xqvgt0 ""

Ej ck "O ctv kpgl "y cpngf "Lcemuq "hqt "j gt "tgr qt v0

**PRESIDENTIAL SEARCH:**

Vtwuvgg "F qwi nuu "uj ctgf "y cv "y g "r tgxkqwu "r tgu kf gpv kni "ugctej "vqmi "cr r tqzko cvgn { "34 "o qpj u "v "eqo r rvgv "Vj ku " vko grkpg "kpenm { gf "r qukpi "y g "r qukqp. "eqpukf gtkpi "cr r hcevkpu. "ecni kpi "ecpf kf cvgu "v "eco r wu "hqt "kpvgt xky u. " ugrgevkpa. "cpf "y ckki "hqt "y g "ugrgevgf "ecpf kf cvg "v "o qxg "v "I ctf gp "Ek { 0 "F qwi nuu "y gpv "qp "v "gpeqwtci g " Vtwuvggu "v "dgi k "y g "r tqeguu "cpf "y g "r quukdkk { "qh "wukpi "y g "Cuqekv kpa "qh "Eqo o wpk { "Eqmgi g "Vtwuvggu " qti cpk cvkqp "v "j gr "hcekkcv "y g "ugctej 0 "Wukpi "y ku "qti cpk cvkqp "y qwf "kpxqixg "c "hgg0 ""

Vtwuvgg "J k { "xqlegf "j ku "qdlgevkpa. "kpukupi "y cv "c "mipi "gz vpu xv "ugctej "y cu "wppgeguuct { . "cpf "y cv "y g "dqctf "eqwf " mqnkpvgt pcm { "cpf "j ktg "T wf c "s wknm { 0 "Cnj qwi j "y gtg "ku "pq "guvcdkuj gf "r tqeguu "hqt "y g "eqmgi gau "r tgu kf gpv kni " ugctej . "Tcpf { "I tkugm "C wqtpg { "hqt "y g "I EEE "Dqctf "qh"Vtwuvggu. "tgeqo o gpf gf "hqmny kpi "y g "r tgeg f gpv "ugv "d { " y g "r tgxkqwu "dqctf 0 "Hgmny "Vtwuvggu "t gkphqtegf "y gk "uwr r qtv "qh "c "pvcqpcn "ugctej "k "qtf gt "v "hwtkn "y gk " eqo o ko gpv "v "f wg "f kki gpeg "v "y g "r wdike "k "eqpukf gtkpi "cmi "r qvgn "ecpf kf cvgu "hqt "y g "r tgu kf gpv kni "r qukqp0 "

"  
"  
"

Kpvtko "Rt gukf gpvT wf c'ci tggf 'y cv'k'ku'ko r qtvcpv'vq'i q'vj tqwi j 'y g'r tqeguu'cpf "guvcdnkuj 'etkgtk' hqt'vj g' r t gukf gpv'kcn'ugctej 0"Kp'c"eqpugpuwu'f gekukqp'd{ 'y g'dqctf .c'eqo o kvgg'eqpukv'kpi 'qh'Vtwugg'J k' .Vtwugg' F qwi r'uu.'cpf "Vtwugg'Et'ku.'y knieqpu'kf gt 'etkgtk'cpf 'f gvcku'qh'vj g'r t gukf gpv'kcn'ugctej 0"

**GCCC UPDATE:**

Vj ku'r qtv'kqp'qh'vj g'o ggv'kpi 'ku'tgr'v'v'f 'v'uwf gpv'cee'qo r r'kuj o gpw.'ce'v'k'k'ku.'eco r wu'x'k'k'q'ku.'cpf 'ur' gekcn' g'x'gpw'vj cv'j cxg'v'cngp'r r'ceg'k'p'vj g'I EEE'eco r wu'eqo o w'p'k'v' { 'uk'peg'vj g'r'cu'v'Dqctf 'qh'Vtwugg'o ggv'kpi 0"

Kpvtko "Rt gukf gpv.T { cp'T wf c'uj ctgf 'y g'hq'ny kpi 'kph'qto cv'kqp'y kj "Vtwuggu0"

I ctf gp'Ekv{ 'Eqo o w'p'k'v' { 'Eqmgi g'cpf 'Hqt'v'J c { u'U'cv'g'W'p'k'x'g'tukv{ 'uki pgf 'c'r ct'v'p'gt'uj k' 'v'q'r t'q'x'k'f'g'cp'g'cu{ " v'c'p'uk'k'qp'hqt'uwf gpw'v'c'p'uh'gtt'kpi 'h'q'o 'I EEE'v'q' H'J U'W'0'P'k'p'g'v'g'p'ct'v'w'v'k'qp'ci t'g'go gpw'y g't'g'uki pgf 'v'q'd'g'p'g'h'k'v' uwf gpw'k'p'vj g'k'v'c'p'uk'k'qp'v'q'Hqt'v'J c { u'U'cv'g'k'p'gf w'ec'v'k'p'.'D'w'uk'p'guu.'U'V'G'O . 'E't'ko k'p'cn'L'w'v'k'eg.'cpf "V'gej p'k'c'cn' U'w'f'k'gu0"

Vj g'c'p'p'w'cn'Dt'q'ped'w'ug't'D'w'f { 'f'c { 'y'cu'j'grf 'C'w'w'w'47'y'kj 'c'i t'g'c'v'w't'p'q'w'q'h'h'k'f'u'y'c'p'v'k'pi 'v'q'o'g'v'v'j'g'r'r'c' { g'tu0"

Vj g'h'k'v'v'q'q'v'c'm'i co g'y'cu'q'p'U'g'r'v'go d'gt'3'y'kj 'I EEE'y'k'p'p'k'pi '74'v'q'46'ci'c'k'p'u'v'F'q'f'i'g'Ekv{ 'Eqo o w'p'k'v' { 'Eqmgi g'0'U'k'peg'vj'gp.'y'g'v'g'co 'j'cu'c'nu'q'f'g'h'g'c'v'g'f'G'm'y'q't'v'j'Eqo o w'p'k'v' { 'Eqmgi g'0'E'w't'g'p'w'v' { 'y'g'D'w'ug't'h'q'q'v'c'm'i' v'g'co 'ku't'c'p'ng'f'p'w'o d'gt'ug'x'gp'k'p'vj'g'p'c'v'k'p'c'n'r'q'n'0"Kpvtko "Rt gukf gpvT wf c'gz'v'g'p'f'gf'eq'pi'c'w'w'v'k'p'u'v'q'Eq'cej " U'k'o'u.'y'g'v'c'h'h'c'p'f'uw'f'gp'w'0"

I ctf gp'Ekv{ 'Eqo o w'p'k'v' { 'Eqmgi g'H'k'p'g'c't'w'j'grf 'c'D'r'c'emo'k'j'k'pi 'y'q't'm'ij'q'r'v'j'c'v'y'cu'r't'g'ug'p'v'g'f'd { 'Hqt'v'J c { u'U'cv'g' " W'p'k'x'g'tukv{ 'r'q'h'g'u'q't'V'q'd { 'H'q't'g'u'c'p'f'F'c'p'k'g'r'T'q'd'k'p'u'q'p.'k'p'v'j'g'O'g't'eg't'I'c'm'g't { 0"V'j'g't'g'y'cu'g'z'eg'm'g'p'v'w't'p'q'w'h'q't' " v'j'ku'g'x'gp'w'0"

U'w'f'gp'v'I'q'x'g't'p'o'gp'v'c'u'u'q'ek'v'k'p'r'c't'v'p'g't'f'y'k'j' 'H'k'p'p'g' { 'E'q'w'p'v' { 'N'x'g'Y'g'n'v'q'r't'q'o'q'v'g'Y'q't'r'f'U'w'k'f'g'R't'g'x'g'p'v'k'p' " F'c { 0"U'w'f'gp'w'r'c't'v'k'r'c'v'g'f'k'p'c'x'c't'k'v' { 'q'h'c'e'v'k'k'k'g'u'0"Kpvtko "Rt gukf gpvT wf c'g'z'r't'g'u'g'f'j'ku'c'r'r't'g'ek'v'k'p'v'q'U'w'f'gp'v' " I'q'x'g't'p'o'gp'v'N'c'w't'g'p'T'q'ej'q'r'f.'U'I'c'c'f'x'k'q'q't.'c'p'f'q'v'j'g't'u'h'q't'j'q'u'v'k'pi 'y'ku'k'o'r'q't'v'c'p'v'g'x'gp'w'0"

H'k'v'v'g'ur'q'p'f'g'tu.'O'g'o d'g't'u'q'h'v'j'g'P'c'v'k'p'c'n'I'w'c't'f.'Eqo o w'p'k'v' { 'H'c'ew'v' { 'c'p'f'U'c'h'h'y'g't'g'r't'g'ug'p'v'v'q'r'c { 't'g'ur'g'ew' " c'p'f't'g'o'g'o d'gt'v'j'q'u'g'y'j'q'j'c'x'g'h'c'm'g'p'f'w'k'pi 'y'ku'o'q't'p'k'pi'u'I'EEE"; /33'O'g'o'q't'k'cn'Q'd'ug't'x'c'p'eg'0"K'y'cu'c'i't'g'c'v' eqo o w'p'k'v' { 'g'x'g'p'v'h'q't'v'j'g't'g'o'g'o d't'c'p'eg'q'h'; B30"

R'g'h'q't'o'c'p'eg'c'i't'g'go'gp'w'y'g't'g'x'k'g'y'g'f'd { 'M'D'Q'T'v'j'ku'r'c'u'v'o'q'p'v'j'f'w'k'pi 'y'g't'g'i'w'c't'M'D'Q'T'o'g'v'k'pi'0'I'EEE' " o'g'v'et'k'g't'k'h'q't'322' "h'w'p'f'k'pi'c'p'f'y'cu'c'r'r't'q'x'g'f'c'v'v'j'ku'g'x'g'g'0"V'j'ku'uj'q'y'u'v'j'g'h'q'ew'u'v'j'c'v'h'c'ew'v' { 'u'c'h'h'c'p'f' " c'f'o'k'p'k'v'c'k'p'j'c'x'g'r'w'q'p'v'j'g'u'g'ul'z'r'g't'h'q't'o'c'p'eg'k'p'f'k'ec'v'q't'u'0"V'j'ku'h'k'p'f'k'pi'r't'q'x'k'f'g'u'v'j'g'c'x'g'p'w'g'h'q't'p'g'y'h'w'p'f'u'c'u' " y'g'm'c'u'i't'ep'v'q'r'r'q't'w'p'k'k'g'u'y'k'j'v'j'g'v'c'v'g'0"t'g'eg'k'k'p'i'h'w'p'f'k'pi'c'v'322' "g'x'g'n'uj'q'y'u'v'j'c'v'I'EEE'ku'o'c'k'p'v'c'k'p'k'pi' " h'q'ew'u'q'p'v'j'g'u'g'et'k'g't'k'0"Kpvtko "Rt gukf gpvT wf c'eq'pi'c'w'w'v'g'f'h'c'ew'v' { 'c'p'f'u'c'h'h'k'p'x'q'r'k'g'f'k'p'o'g'v'k'pi 'y'ku' " d'g'p'ej'o'c't'n'0"

E'j'c'k'0'c't'v'k'p'g'j'v'c'p'ng'f'Kpvtko "T'w'f'c'h'q't'j'ku't'g'r'q't'v'0"

**REPORT FROM FACULTY SENATE:**

R'j'k'i'J'q'ng.'H'c'ew'v' { 'U'g'p'c'v'g'f't'c'o'c'k'p'ut'w'ev'q't.'d'g'i'c'p'j'ku't'g'r'q't'v'd { 'g'z'r't'g'u'k'pi 'y'c'v'h'c'ew'v' { 'U'g'p'c'v'g'k'u'g'p'i'c'i'g'f'c'p'f' " u'g'w'g'f'k'p'q'v'j'g'h'c'm'l'ug'o'g'u'g't'0"J'q'ng'eq'p'v'k'p'w'g'f'd { 'g'z'r't'g'u'k'pi 'y'g'h'c'ew'v' { 'c'u'c'r'r't'g'ek'v'k'p'v'q'L'c'es'w'g'n'p'0'g'u'k'pi'g't.' " F'g'c'p'q'h'k'p'k'w'k'p'c'n'G'h'g'v'k'x'g'p'g'u.'T'g'ug'c't'ej.'c'p'f'R'c'p'p'k'pi'. 'h'q't'v'j'g'g'z'v'g'p'uk'x'g'y'q't'n'ij'g'j'c'u'f'q'p'g'q'p'v'j'g't'g/ c'e'et'g'f'k'c'v'k'p'r't'q'eg'u'0"O'g'u'k'pi'g't'y'k'n'i'd'g'y'q't'n'k'pi 'y'k'j' 'h'c'ew'v' { 'c'p'f'u'c'h'h'r't'g'r'c't'k'pi 'y'g'o' 'h'q't'v'j'g'q'p'uk'g'x'k'k'v'q'h'v'j'g' " J'N'E'v'g'co'k'p'P'q'x'g'o d'gt'0"J'q'ng'c'nu'q'k'p'f'k'ec'v'g'f'v'j'c'v'h'c'ew'v' { 'c't'g'x'g't { 'g'p'v'j'w'uk'v'k'c'c'd'q'w'v'Kpvtko "Rt gukf gpvT wf c'c'u' " y'g'g'm' { 'p'g'y'ur'g'w'g't'c'p'f'uw'f'gp'v'q'h'v'j'g'y'g'g'm'l'ug'r'g'v'k'p'k'p'c'f'f'k'k'p'v'q'o'g'v'k'pi 'y'k'j' 'H'c'ew'v' { 'U'g'p'c'v'g'h'g'c'f'g't'uj'k'r'0"

Hoke noted that the stress from the previous semester was gone and faculty were filled with a sense of energy. A brief discussion regarding faculty meeting required face time for classes, covering classes in a faculty absence, and policy on faculty to student relationships took place. Hoke reported that Division Leaders and Dean of Instruction/Academic oversees all faculty activity.

Chair Martinez thanked Hoke for his report.

**CONSENT AGENDA:**

Chair Martinez asked if Trustees wished to remove any items from the consent agenda. No items were removed.

Chair Martinez then asked for a motion approving consent agenda items II A-DC as presented.

**Motion:**

***Worf moved, seconded by Crist to approve consent agenda items, II A-D as presented.***

***Ayes: Crist, Douglass, Hitz, Martinez, Wasinger, Worf***

***Nays:***

***Motion carried: 6-0***

Approved actions follow:

**(A) APPROVED MINUTES** of previous meeting (August 14, 2018)  
(Supporting documents filed with official minutes.)

**(B) APPROVED PERSONNEL ADJUNCT/OUTREACH CONTRACTS**, as presented  
(Supporting documents filed with official minutes.)

**(C) APPROVED SUBMITTED FINANCIAL INFORMATION**, as presented  
(Supporting documents filed with official minutes.)

**(D) APPROVED CORRECTED KAN REN INVOICE TOTAL**, as presented  
(Supporting documents filed with official minutes.)

**MONITORING REPORTS and ENDS REPORTS:**

Trustees indicated they had received and reviewed the following monitoring report:

- Annual, Ends, Workforce Development

Trustees agreed to accept the monitoring report as presented.

**REVIEW OF MONITORING REPORTS:**

- Annual, Executive Limitations, Asset Protection

**BOARD PROCESS AND POLICY GOVERNANCE REVIEW:**

Policy Governance Officer, Dr. Marilyn Douglass asked Trustees to turn to page 9 in their Policy Governance Handbook. Trustee Douglass reported that upon advise from Garden City Community College Board attorney, Randy Grisell, the following statement will be added to General Executive Constraints, #4 Compensation and benefits for staff shall not deviate significantly from market, as item "a".

- a. Employment contracts shall be reviewed by legal counsel and approved by the board.***

**Motion:**

**Worf moved, seconded by Crist to approve the addition of “a. Employment contracts shall be reviewed by legal counsel and approved by the board.” to General Executive Constraints, page 9, #4, as advised by Garden City Community College Board Attorney.**

**Ayes: Crist, Douglass, Hitz, Martinez, Wasinger, Worf**

**Nays:**

**Motion carried: 6-0**

Trustees briefly discussed adding a section to GCCC policies that addresses sexual misconduct.

**REPORT FROM FINNEY COUNTY ECONOMIC DEVELOPMENT CORPORATION:**

Chair Martinez reported the following:

- FCEDC has industrial prospects that could result in increased Technical Program training opportunities for GCCC.
- FCEDC has some industrial prospects that will need specialized/custom training. Meetings will continue and will offer customized technical training through GCCC.
- Chair Martinez noted that he continues to receive good reports about Dean Pfeifer and the work he is doing with work force.

**REPORT FROM KANSAS ASSOCIATION OF COMMUNITY COLLEGE TRUSTEES**

Trustee Crist reported the following:

- Trustee Crist indicated a lot of attention has been focused legislative advocacy as this is an election year.
- Next quarterly meeting is in September 14-15 at Highland Community College, Trustee Crist will have a more complete report at the October meeting.

**REPORT ON HIGHER LEARNING COMMISSION:**

Ryan Ruda, Interim President/Instruction/Student Services reported that the Assessment report has been submitted. Interim President Ruda expressed his thanks to Messinger, Sanger and all involved in accomplishing this monumental task.

Interim President Ruda then turned to Jacquelyn Messinger, Dean-Institutional Effectiveness / Planning and Research, to update Trustees on HLC/Accreditation. Messinger shared her knowledge regarding HLC and a presidential search. Messinger reported that due diligence must be performed as an institution regarding a search for the seventh president of GCCC. Messinger stated that it was important for the college to follow proper search processes and consider all available candidate when searching for a president. This is for the protection of the board as well as the college. Appointing an Interim President gives GCCC the consistency that is needed at this time.

Messinger went on to say that all requirements have been met and Phase I of the HLC process (Assessment Document submission, all physical evidence) was completed at 9:10 p.m. on September 10, 2018. Additional requests from HLC will be responded to in a timely manner.

Phase II begins now, preparation of faculty, staff and trustees for the site visit on November 5-7. Messinger went on to say that there is still plenty of work to be done and that the entire process could complete as last as June or July 2019.



**OWNERSHIP LINKAGE:**

Trustee Wasinger expressed his appreciation of the opportunity to hear former Florida State and Tennessee Titans star Myron Rolle when he came to GCCC to visit with Buster Football players. Trustee Wasinger stated that it was refreshing to hear him talk on importance of education and not just the NFL.

Trustee Wasinger was thankful for the use of the GCCC Mobile Classroom at Buffalo Dunes during the Pro-Am golf tournament. The Mobile Classroom was used by the scorers and they appreciated the air conditioning.

Trustee Wasinger attended A Wild Affair last weekend at the zoo. Great Western Dinning did a great job representing their culinary skills and were also an outstanding representative for GCCC.

Trustee Worf asked GCCC Board Attorney Randy Grisell for an update on the investigation that Greg Goheen is conducting. Grisell shared that he expected the investigation to be complete in 30 days.

**CALENDAR DATES:**

Chair Martinez reviewed calendar dates with Trustees.

**EXECUTIVE SESSION:**

**Motion:**

*Douglass moved, seconded by Wasinger to go into executive session for fifteen (15) minutes, for the purpose of consultation with the attorney for the Board of Trustees on matters that would be deemed privileged in the attorney-client relationship, specifically potential claims or litigation, allowing five (5) minutes to clear the room. The open meeting will resume in the Endowment Room of the Beth Tedrow Student Center in fifteen (15) minutes, (8:20 p.m.). Included in the executive session will be GCCC Board of Trustees, Randall Grisell, Attorney for Garden City Community College Board of Trustees, and Ryan Ruda Interim President, Vice President for Instruction/Student Services.*

*Ayes: Crist, Douglass, Hitz, Martinez, Wasinger, Worf*

*Nays: None*

*Motion carried: 6-0*

Board recessed into executive session at 8:05 p.m.

**Included in Executive Session:**

GCCC Board of Trustees

Randall Grisell, Attorney for Garden City Community College Board of Trustees

Interim President, Vice President/Instruction/Student Services, Ryan Ruda

Board reconvened into open session at 8:20 p.m.

No binding action was taken.

**EXECUTIVE SESSION:**

**Motion:**

*Crist moved, seconded by Douglass to go into executive session for fifteen (15) minutes, for the purpose of Board of Trustees discussion on personnel matters of non-elected personnel which if discussed in open meeting might violate their right to privacy, specifically an individual employee's performance, allowing five (5) minutes to clear the room. The open meeting will resume in the Endowment Room of the Beth Tedrow Student Center in fifteen (15) minutes, (8:40p.m.). Included in the executive session will be GCCC Board of Trustees, Randall Grisell, Attorney for Garden City Community College Board of Trustees, and Ryan Ruda Interim President, Vice President for Instruction/Student Services.*

**Ayes:** Crist, Douglass, Hitz, Martinez, Wasinger, Worf  
**Nays:** None

**Motion carried: 6-0**

Dqctf "tgeguugf "kpvq "gzgewkxg"uguukqp"cv": <47"r 0 0'

P q"dkpf kpi "cevkqp"y cu'vcnnp0'

**ADJOURNMENT:**

**Motion:**

**Douglass moved, seconded by Worf to adjourn the September 11, 2018 Garden City Board of Trustee meeting."**

**Ayes:** Crist, Douglass, Hitz, Martinez, Wasinger, Worf  
**Nays:** None

**Motion carried: 6-0"**

O ggkpi "cf lqwtpgf "cv": <67"r 0 0'

**UPCOMING CALENDAR EVENTS:**

- Qevdgt "7" " P q'Ernuugu."HcmiDtgcmiQHhegu"qr gp"
- Qevdgt"; " " I EEE"Dqctf "qh'Vtwugg'O ggkpi . '8-22'r 0 0'Gpf qy o gpvTqqo "qh'Dgj "Vgf tqy "Uwf gpvEgpvt"
- Pqxgo dgt "7/9" " J NE'Ukg"Vgco 'eco r wu'xkuk'
- Pqxgo dgt "35" " I EEE"Dqctf "qh'Vtwugg'O ggkpi . '8-22'r 0 0'Gpf qy o gpvTqqo "qh'Dgj "Vgf tqy "Uwf gpvEgpvt"
- Pqxgo dgt "3; /45"" Vj cpni kxkpi 'Dtgcm'P q'Ernuugu."QHhegu"Enugf "
- Fgego dgt "33" " I EEE"Dqctf "qh'Vtwugg'O ggkpi . '8-22'r 0 0'Gpf qy o gpvTqqo "qh'Dgj "Vgf tqy "Uwf gpvEgpvt"
- Fgego dgt "39/Lcpwct {"4" Ej tkvo cu'Dtgcm'P q'Ernuugu."QHhegu"Enugf "
- Lcpwct {"; .423; " " Ur tkpi "423; 'Ernuugu"Dgi kp"

"  
"  
"  
"  
"  
"  
"  
"

F gdtc'L0C vnkpuqp"	T {cp'Twfc"	Uxg'O ctvpgl "
F gr ww{ 'Engtni'	Kvgtko 'Rtgukf gpv'	Ej ckt'qh'yj g'Dqctf "

**Agenda No: II-B**

**Date: October 9, 2018"**

**Topic: Approval of Personnel Actions-Human Resources"  
Adjunct/Outreach Contracts"**

**Presenter: Acting Interim President, Ryan Ruda"**

**Background Information:"**

Cm'hwn/ko g"go r m{ ggu'j k gf "d { 'y g"eqmgi gø"cf o kpkwcvkp"ctg'r t gupvfg "o qpj n{ "q"y g"dqctf 0" Vj g"  
hqmj kpi 'f qewo gpvtgr t gupw'pgy "go r m{ ggu'cpf "tcpuhtulr tqo qvqpu'ugt xkpi 'I ctf gp'Ekv{ "  
Eqo o wpkv{ 'Eqmgi g"cpf "ctg'r t gupvfg 'hqt "dqctf "cr r tqxcif'

**Budget Information:"**

Ucrtkgu"ctg"eqo o gpwvcg'y kj 'f wkgu'cpf "tgr qpukdkkkgu'cpf "ctg'kpenwf gf 'k'v'j g"cppwcn'dwf i gv'

**Recommended Board Action:"**

Cr r tqxg'y g'r gtuqppgrihqt"go r m{ o gpv'tgvt go gpv.'ugr ctcvkp."cpf "tcpuht l r tqo qvqpu'cu'tgr qtvgf "d{ 'y g"  
qhheg'qh'J wo cp'Tgrvqpu0'

**Board Action Taken: \_\_\_\_\_Approved \_\_\_\_\_Disapproved"**

**\_\_\_\_\_Ayes \_\_\_\_\_Nays \_\_\_\_\_No Action"**

**Board Member Notes:"**

\*\*\*\*\*

"



"

"

"

Qevdgt"4."423: "

"

"

To: "" Dqctf "qh"Vtwvngu"

From: "" Crgzki"Ucgp| .J wo cp"Tuqwtegu"Cuukwcpv"

"

P gy "J ktgu"

Vtcek"Vj wo o gn"Cecf go le"Dwkf kpi "Ugetgvct { ."ghgevxg."Ugr vgo dgt"46."423: "

Iguug"Eci ng."Cf o kpkwcvxg"Cuukwcpv"vq"vj g"XR"ht"Kpwtwvqp"cpf "Uwf gpv"Ugtxlegu."ghgevxg."

Qevdgt"6."423: "

Mlo dgtnt"Hitpeku."Cuukwcpv"Etqu"Eqwvt { IVtcent"cpf "Hgrf "Eqcej ."ghgevxg."Qevdgt": ."423: "

"

Tguki pcvkpu"

I ngpf qp"Hqti g { ."Xleg"Rtgukf gpv"qh"Dwukpguu"ChhktuEHQ."ghgevxg."Ugr vgo dgt"52."423: "

Cpf tgy "I qwi j ."F ktgevqt"qh"KV."ghgevxg."Qevdgt"3."423: "

"

"

**Diversity Recruitment Opportunity**

"

Kp'tgugctej kpi "ghgevxg"y c { u"qh"cf xgtvklpi "I EEE"hcwn { "cpf "qj gt"r tqhguakpcnr quksqp"xcecpelgu."c"o qtg"chhqtfdng"cngtpcvxg"go gti gf "tgegpvt(0"Y g'r rceg"qwt" pcvkpcnr quksqp"cf xgtvklpi "y kj "c"ngcf kpi "y gduksgecngf "J ki j gtGf Lqduleqo ."cpf "pqy "y g"J GL"uksg"j cu"cf f gf "cp"cf f kkpccnr"ugtxleg0"Y j gp"y g'r rceg"82/f c { " xcecp { "r qukpi "y g"ctg"pqy "j cxkpi "y g"uco g"cf xgtvklgo gpv"o ckrf "q"err tqzko cvgn"364.222"r tqhguakpcnr"y j q"j cxg"kf gpv"htgf "y go ugrxgu"cu"o kpktk { "gf wecvqtu" ugnkpi "go r nq { o gpv"Vj g"o ckilo guuci g"cmqy u"pvtgugf "r tqhguakpcnr"vq"eqpvev"wu"t kgev { ."cpf "k'cmq"lpenwf gu"c"tkpni"vq"j g"J GL"uksg."y j lej "cmqy u"cp"l pvtgugf " cr r rncpv"vq"pexki cvg"vq"y g"t EEE"y gduksgecngf"err nq "qprkpg0"

**GARDEN CITY COMMUNITY COLLEGE  
 ADJUNCT/OUTREACH FACULTY CONTRACTS**

INSTRUCTOR	CLASS	AMOUNT
<b>ADJUNCT CONTRACTS</b>		
Hands, Casey	Appl Music: Instr I-Euphonium MUSC-1021-09 - 1.00 credit hour(s) \$200 X 1 Student = \$200.00 8/13/2018 - 12/6/2018	\$ 200.00
Hands, Casey	Appl Music: Instr III-Trumpet MUSC-2031-06 - 1.00 credit hour(s) \$200 X 1 student = \$200.00 8/13/2018 - 12/6/2018	\$ 200.00
Johnson, Christopher	App Music: Instr III-Trombone MUSC-2031-08 - 1.00 credit hour(s) \$200 X 1 Student = \$200.00 8/13/2018 - 12/6/2018	\$ 200.00
Johnson, Christopher	Appl Music: Instr I-Trombone MUSC-1021-08 - 1.00 credit hour(s) \$200 X 2 Students = \$400.00 8/13/2018 - 12/6/2018	\$ 400.00
Johnson, Christopher	Applied Music: Instr II-Tuba MUSC-1031-10 - 1.00 credit hour(s) \$200 X 1 Student = \$200.00 8/13/2018 - 12/6/2018	\$ 200.00
Johnson, Christopher	Applied Music: Instr I-Trumpet MUSC-1021-06 - 1.00 credit hour(s) \$200 X 1 Student = \$200.00 8/13/2018 - 12/6/2018	\$ 200.00
Johnson, Christopher	Applied Music: Instr I-Tuba MUSC-1021-10 - 1.00 credit hour(s) \$200 X 1 Student = \$200.00 8/13/2018 - 12/6/2018	\$ 200.00
Johnson, Makenzi	App Musc: Instr III-Saxophone MUSC-2031-04 - 1.00 credit hour(s) \$200 X 1 Student = \$200.00 8/13/2018 - 12/6/2018	\$ 200.00
Johnson, Makenzi	App Music: Instr III-Clarinet MUSC-2031-03 - 1.00 credit hour(s) \$200 X 1 Student = \$200.00 8/13/2018 - 12/6/2018	\$ 200.00

**GARDEN CITY COMMUNITY COLLEGE**  
**ADJUNCT/OUTREACH FACULTY CONTRACTS**  
 \*Rtggpvgf "q'Dqctf "qhtVtwgggu'ht'Crr tqxcif3212; #423: +

Johnson, Makenzi	App Music: Instr IV-Saxophone MUSC-2041-04 - 1.00 credit hour(s) \$200 X 1 Student = \$200.00 8/13/2018 - 12/6/2018	\$	200.00
Johnson, Makenzi	Appl Music: Instr I-Percussion MUSC-1021-11 - 1.00 credit hour(s) \$200 X 1 Student = \$200.00 8/13/2018 - 12/6/2018	\$	200.00
Johnson, Makenzi	Appl Music: Instr I-Saxophone MUSC-1021-04 - 1.00 credit hour(s) \$200 X 1 Student = \$200.00 8/13/2018 - 12/6/2018	\$	200.00
Johnson, Makenzi	Applied Music: Instr I-Bassoon MUSC-1021-05 - 1.00 credit hour(s) \$200 X 1 Student = \$200.00 8/13/2018 - 12/6/2018	\$	200.00
Johnson, Makenzi	Applied Music: Instr I-Flute MUSC-1021-01 - 1.00 credit hour(s) \$200 X 2 Students = \$400.00 8/13/2018 - 12/6/2018	\$	400.00
Johnson, Makenzi	Applied Music: Instr III MUSC-203-03 - 1.00 credit hour(s) \$200 X 1 Student = \$200.00 8/13/2018 - 12/6/2018	\$	200.00
Johnson, Makenzi	Applied Music: Instrumental I MUSC-102-03 - 1.00 credit hour(s) \$200 X 1 Student = \$200.00 8/13/2018 - 12/6/2018	\$	200.00
Johnson, Makenzi	App Musc: Inst III-Percussion MUSC-2031-11 - 1.00 credit hour(s) \$200 X 2 Students = \$400.00 8/13/2018 - 12/6/2018	\$	400.00
Johnson, Makenzi	MASTER SLAVE Percussion Ensemble I, III, IV MUSC-158-90, 208-90, 227-90 - 1.00 credit hour(s) 1.00 credit hour(s) X \$500.00 = \$500.00 8/13/2018 - 12/6/2018	\$	500.00
Johnson, Makenzi	App Musc: Instrumental I MUSC-102-04 - 1.00 credit hour(s) \$200 X 1 Student = \$200.00 8/13/2018 - 12/6/2018	\$	200.00

**GARDEN CITY COMMUNITY COLLEGE**  
**ADJUNCT/OUTREACH FACULTY CONTRACTS**  
 \*Rtggpvgf "q'Dqctf "qhtVtwgggu'ht'Cr r tqxcif32l2; #423: +

Lowry, Joseph	App Music-Kbd Instr IV Piano MUSC-2061-01 - 1.00 credit hour(s) \$200 X 1 Student = \$200.00 8/13/2018 - 12/6/2018	\$	200.00
Lowry, Joseph	App Music-Keybd Instr I: Piano MUSC-1041-01 - 1.00 credit hour(s) \$200 X 2 Students = \$400.00 8/13/2018 - 12/6/2018	\$	400.00
Lowry, Joseph	Appl Music-Keyboard Instr III MUSC-205-01 - 1.00 credit hour(s) \$200 X 1 Student = \$200.00 8/13/2018 - 12/6/2018	\$	200.00
Lowry, Joseph	Applied Music-Keyboard Instr I MUSC-104-01 - 1.00 credit hour(s) \$200 X 2 Students = \$400.00 8/13/2018 - 12/6/2018	\$	400.00
Pauley, Katherine	Strategic Team Building I CRIM-165-02 - 1.00 credit hour(s) 1.00 credit hour(s) X \$500.00 = \$500.00 9/29/2018 - 11/2/2018	\$	500.00
Pauley, Paul	Strategic Team Building I CRIM-165-01 - 1.00 credit hour(s) 1.00 credit hour(s) X \$500.00 = \$500.00 9/29/2018 - 11/2/2018	\$	500.00
Routon, Timothy	App Music: Instr III - Guitar MUSC-2031-90 - 1.00 credit hour(s) \$200 X 2 Students = \$400.00 8/13/2018 - 12/6/2018	\$	400.00
Routon, Timothy	Appl Music: Instr II -Guitar MUSC-1031-90 - 1.00 credit hour(s) \$200 X 1 Student = \$200.00 8/13/2018 - 12/6/2018	\$	200.00
Routon, Timothy	Applied Music: Instrumental I MUSC-102-90 - 1.00 credit hour(s) \$200 X 7 Students = \$1400.00 8/13/2018 - 12/6/2018	\$	1,400.00
Stefan, Sabrina	MASTER SLAVE Certified Nurse Aide HELR-1023-SA & 1023SA1 - 3.00 credit hour(s) 3.00 credit hour(s) X \$500.00 = \$1500.00 8/14/2018 - 10/1/2018	\$	1,500.00
Stefan, Sabrina	Certified Nurse Aide Lab HELR-102L-SA1 - 2.00 credit hour(s) 2.00 credit hour(s) X \$500.00 = \$1000.00 8/14/2018 - 10/1/2018	\$	1,000.00

**GARDEN CITY COMMUNITY COLLEGE  
 ADJUNCT/OUTREACH FACULTY CONTRACTS**

Weeks, Ben	MASTER SLAVE Beginning Rappelling CRIM-150-30 & HPER-158-30 - 1.00 credit hour(s) 1.00 credit hour(s) X \$500.00 = \$500.00 9/9/2018 - 9/16/2018	\$	500.00
Weeks, Ben	Strategic Team Building I CRIM-165-03 - 1.00 credit hour(s) 1.00 credit hour(s) X \$500.00 = \$500.00 9/29/2018 - 11/2/2018	\$	500.00
<b>TOTAL ADJUNCT FACULTY CONTRACTS</b>		<b>\$</b>	<b>12,400.00</b>

<b>NON-CREDIT ADJUNCT CONTRACTS</b>			
Mersmann, Joel	Intro to Career Graphics PERS-200-01 NON-CREDIT- 24 hrs. 24 contact hour(s) @ \$30.00 = \$720.00 09/20/2018 - 11/09/2018	\$	720.00
Routon, Tim	Woodworking HMGC-175-01 NON-CREDIT -42 hrs. 42 contact hour(s) @ \$30.00 = \$1,260.00 09/04/2018 - 12/11/2018	\$	1,260.00
Schneider, Jane	Challenge Course-Ropes NON-CREDIT - 3 hrs. 3 contact hour(s) @ \$15.00 = \$45.00 9/29/2018	\$	45.00
Schneider, Mitch	Challenge Course-Ropes NON-CREDIT - 3 hrs. 3 contact hour(s) @ \$15.00 = \$45.00 9/29/2018	\$	45.00
<b>TOTAL NON-CREDIT ADJUNCT CONTRACTS</b>		<b>\$</b>	<b>2,070.00</b>



**Agenda No: II-C**

**Date: October 9, 2018"**

**Topic:** Hkpcpekn'kphqto cvkqp"

" "

**Presenter: Acting Interim President, Ryan Ruda**

**Background Information:"**

Rtgugpvkqp"qh'o qpj n{ 'hkpcpekn'f qewo gpw<"

- " Ej gemu"qxgt "&7.222"
- Tgxgpwgu"
- Gzr gpugu"
- " Ecuju'kp"Dcpm'

**Budget Information:"**

Hkpcpekn'kphqto cvkqp'tgr tguwpw"3+"o qpj n{ 'gzr gpf kwtgu"qxgt "&4.222"4+"ecuju' f gr quku0'

**Recommended Board Action:"**

Ceeqr v'cpf "er r tqxg' hkpcpekn'kphqto cvkqp"cu'r tguwpvf 0'

**Board Action Taken: \_\_\_\_\_Approved \_\_\_\_\_Disapproved"**

**\_\_\_\_\_Ayes \_\_\_\_\_Nays \_\_\_\_\_No Action"**

**Board Member Notes:"**

EJ GEMU'RTQEGUUGF 'R 'GZEGUU'QH'&72.222'''

Ugr vgo dgt'423: '''

"

"

Rwtej cugu'qxgt '&72.222'tgs wtkpi 'dkf 'uj ggu'

- &372.576076'y ktg'ugpv'vq'Er{ vpp"J qrf kpi u'hqt'Ngcug'Rwtej cug'r c{o gpv'hqt'vj g" Dtqpedwvgt'Uwkgu'r c{o gpv'f wg'32B B: +0"Vj g'r vtej cug'y cu'cr r tqxgf "d{ 'vj g'Dqctf 'qh' Vtwvnggu'qp'O ctej '52.'42380'
- Ej geni%4874; : 'vq'Ngy ku'J qqr gt'( 'F leni'NNE'hqt"&84.222022'hqt'r ctvkn'r c{o gpv'hqt" cwf kkp'i 'ugt'xlegu0"Vj ku'ku'c'hkg"{ gct'eqvtcev'cr r tqxgf "d{ 'vj g'Dqctf "qp'Cr tkd'33.'42390'
- Ej geni%487; 27'vq'McpTgp'hqt"&7; .743063'hqt'f cwc'eqo o wplecvkqp'ugt'xleg"cr r tqxgf "d{ " vj g'Dqctf "qp"Ugr vgo dgt'33.'423: 0'

"

"

Rc{o gpw'qxgt '&72.222'pqv'tgs wtkpi 'dkf 'uj ggu'

"

- Ej geni%48749; 'vq'Ekv{ 'qh'I ctf gp'Ekv{ 'hqt"&94.5: : 07; 'hqt'o qpj n{ 'wkrkkgu0'''
- Ej geni%4874: 3'vq'Eqo o gteg'Dcpn'hqt'&9; .546072'hqt'xctkqwu'r vtej cug'ectf 'r vtej cugu0'''
- Ej geni%4874; 3'vq'I tgcv'Y guvgt'F lkpki 'hqt'& 3.; 540 8'hqt'xctkqwu'kpxqlegu0'''

"

"

"

"

REVENUES

10/03/18

Garden City Community College  
 Annual Budget Report Ending 09/30/18  
 Options - All Statuses

Page: 1

Fiscal Year: 2019

BUDGET.OFFICER: Unassigned

GL Account	YTD Encumbrances	MTD Actual	YTD Actual	Annual Budget	Available	% Avail
11-00-0000-00000-4001 TUITION IN STATE :	0.00	4,331.00-	931,791.00-	2,105,000.00-	1,173,209.00-	55.73
11-00-0000-00000-4004 TUITION OUT OF STA	0.00	16,640.00	116,880.00-	410,000.00-	293,120.00-	71.49
11-00-0000-00000-4005 ACAD COURSE FEE :	0.00	220.00-	50,620.00-	110,000.00-	59,380.00-	53.98
11-00-0000-00000-4007 TECHNOLOGY FEE-C :	0.00	1,241.74-	277,409.76-	525,000.00-	247,590.24-	47.16
11-00-0000-00000-4011 MISC STUDENT BILL	0.00	453.63	2,337.79-	75,100.00	77,437.79	103.11
11-00-0000-00000-4013 TUITION INTERNATIO	0.00	98.00	61,446.00-	115,000.00-	53,554.00-	46.57
11-00-0000-00000-4014 TUITION BORDER STA	0.00	12,750.00-	104,925.00-	255,000.00-	150,075.00-	58.85
11-00-0000-00000-4015 ONLINE COURSE FEE	0.00	2,334.00-	85,599.00-	345,000.00-	259,401.00-	75.19
11-00-0000-00000-4016 NO SHOW FEE : GENE	0.00	500.00	6,050.00-	13,500.00-	7,450.00-	55.19
11-00-0000-00000-4018 RESOURCE CHARGE :	0.00	1,328.00-	174,032.00-	360,000.00-	185,968.00-	51.66
11-00-0000-00000-4020 INTERNATIONAL FEE	0.00	300.00-	17.47	4,100.00-	4,117.47-	100.43
11-00-0000-00000-4021 TUITION ONLINE : G	0.00	5,612.00-	173,545.00-	315,000.00-	141,455.00-	44.91
11-00-0000-00000-4501 BUILDING/ROOM RENT	0.00	4,100.00-	9,830.00-	30,000.00-	20,170.00-	67.23
11-00-0000-00000-4512 VENDING MACHINES :	0.00	438.30-	701.40-	5,000.00-	4,298.60-	85.97
11-00-0000-00000-4601 STATE OPERATING GR	0.00	0.00	834,253.00-	1,668,505.00-	834,252.00-	50.00
11-00-0000-00000-4803 AD VALOREM PROPERT	0.00	174,100.98-	174,100.98-	9,819,183.00-	9,645,082.02-	98.23
11-00-0000-00000-4805 MOTOR VEHICLE PROP	0.00	492,631.04-	492,631.04-	680,000.00-	187,368.96-	27.55
11-00-0000-00000-4806 RECREATIONAL VEHIC	0.00	7,148.99-	7,148.99-	9,000.00-	1,851.01-	20.57
11-00-0000-00000-4807 DELINQUENT TAX : G	0.00	67,417.77-	67,417.77-	185,000.00-	117,582.23-	63.56
11-00-0000-00000-4808 PAYMENTS IN LIEU O	0.00	0.00	0.00	151,000.00-	151,000.00-	100.00
11-00-0000-00000-4809 RENTAL EXCISE TAX	0.00	7,557.28-	7,557.28-	12,000.00-	4,442.72-	37.02
11-00-0000-00000-4810 16/20 M TAX : GENE	0.00	214.17-	214.17-	16,000.00-	15,785.83-	98.66
11-00-0000-00000-4814 COMMERCIAL VEHICLE	0.00	9,595.15-	9,595.15-	87,500.00-	77,904.85-	89.03
11-00-0000-00000-4815 WATERCRAFT CURRENT	0.00	147.54-	147.54-	15,000.00-	14,852.46-	99.02
11-00-0000-00000-4816 TIF TAX : GENERAL	0.00	332.00	332.00	150,000.00	149,668.00	99.78
11-00-0000-00000-4817 NEIGH REVT : GENER	0.00	10,513.85	10,513.85	35,000.00	24,486.15	69.96
11-00-0000-00000-4902 INTEREST INCOME :	0.00	3,224.98-	21,254.58-	100,000.00-	78,745.42-	78.75
11-00-0000-00000-4904 REIMBURSED SALARY	0.00	1,000.00-	2,250.00-	40,000.00-	37,750.00-	94.38
11-00-0000-00000-4905 ADMINISTRATIVE ALL	0.00	0.00	26,535.38-	75,000.00-	48,464.62-	64.62
11-00-0000-00000-4907 MISCELLANEOUS INCO	0.00	75,131.92-	103,884.26-	74,609.00-	29,275.26	39.23-
11-00-0000-00000-4912 TRANSCRIPTS : GENE	35.00-	1,159.10-	3,334.21-	10,000.00-	6,630.79-	66.31
11-00-0000-00000-4999 CONTRA-REV/FUND TR	0.00	0.00	0.00	1,313,140.00	1,313,140.00	100.00
=====						
Totals for FUND: 11 - GENERAL	35.00-	843,446.48-	3,734,627.98-	15,962,157.00-	12,227,494.02-	76.60
=====						
12-00-0000-00000-4005 ACAD COURSE FEE :	0.00	797.00-	167,021.00-	263,324.00-	96,303.00-	36.57
12-00-0000-00000-4015 ONLINE COURSE FEE	0.00	1,638.00-	25,089.00-	30,000.00-	4,911.00-	16.37
12-00-0000-00000-4601 STATE OPERATING GR	0.00	0.00	499,610.00-	999,220.00-	499,610.00-	50.00
12-00-0000-00000-4603 STATE PMT FOR TUIT	0.00	0.00	0.00	80,000.00-	80,000.00-	100.00
12-00-0000-00000-4999 CONTRA-REV/FUND TR	0.00	0.00	0.00	1,313,140.00-	1,313,140.00-	100.00
=====						
Totals for FUND: 12 - PTE FUND	0.00	2,435.00-	691,720.00-	2,685,684.00-	1,993,964.00-	74.24

61-00-0000-00000-4803 AD VALOREM PROPERT	0.00	8,795.50-	8,795.50-	495,799.00-	487,003.50-	98.23
61-00-0000-00000-4805 MOTOR VEHICLE PROP	0.00	24,921.16-	24,921.16-	32,840.00-	7,918.84-	24.11
61-00-0000-00000-4806 RECREATIONAL VEHIC	0.00	361.65-	361.65-	419.00-	57.35-	13.69
61-00-0000-00000-4807 DELINQUENT TAX : G	0.00	3,419.50-	3,419.50-	9,380.00-	5,960.50-	63.54
61-00-0000-00000-4808 PAYMENTS IN LIEU O	0.00	0.00	0.00	7,292.00-	7,292.00-	100.00
61-00-0000-00000-4809 RENTAL EXCISE TAX	0.00	382.31-	382.31-	0.00	382.31	0.00
61-00-0000-00000-4810 16/20 M TAX : GENE	0.00	10.87-	10.87-	749.00-	738.13-	98.55
61-00-0000-00000-4814 COMMERCIAL VEHICLE	0.00	485.43-	485.43-	4,922.00-	4,436.57-	90.14
61-00-0000-00000-4815 WATERCRAFT CURRENT	0.00	7.46-	7.46-	0.00	7.46	0.00
61-00-0000-00000-4816 TIF TAX : GENERAL	0.00	16.78	16.78	20,000.00	19,983.22	99.92
61-00-0000-00000-4817 NEIGH REVT : GENER	0.00	531.34	531.34	0.00	531.34-	0.00
61-00-0000-00000-9999 CONTINGENCY ACCOUN	0.00	0.00	0.00	468,599.00-	468,599.00-	100.00
=====						
Totals for FUND: 61 - CAPITAL OUTLAY	0.00	37,835.76-	37,835.76-	1,000,000.00-	962,164.24-	96.22
=====						
Totals for BUDGET.OFFICER: Unassigned	35.00-	883,717.24-	4,464,183.74-	19,647,841.00-	15,183,622.26-	77.28

EXPENSES

10/03/18

Garden City Community College  
 Annual Budget Report Ending 09/30/18  
 Options - All Statuses

Page: 1

Fiscal Year: 2019

FUND: 11 - GENERAL

GL Account	YTD Encumbrances	MTD Actual	YTD Actual	Annual Budget	Available	% Avail
DEPARTMENT: 11005 - INSTRUCTION SALARY	0.00	1,072.45	2,144.91	0.00	2,144.91-	0.00
DEPARTMENT: 11010 - BUSINESS & ECONOMI	0.00	18,438.36	38,828.11	212,920.00	174,091.89	81.76
DEPARTMENT: 11020 - HUMANITIES	93.56	6,941.81	18,678.52	69,664.00	50,891.92	73.05
DEPARTMENT: 11021 - ENGLISH	0.00	32,419.43	68,870.40	403,350.00	334,479.60	82.93
DEPARTMENT: 11022 - SPEECH	0.00	7,863.87	13,708.25	70,731.00	57,022.75	80.62
DEPARTMENT: 11023 - PHILOSOPHY	0.00	403.69	403.69	0.00	403.69-	0.00
DEPARTMENT: 11024 - PHOTOGRAPHY	0.00	403.69	403.69	0.00	403.69-	0.00
DEPARTMENT: 11025 - JOURNALISM	0.00	4,531.60	12,890.50	53,190.00	40,299.50	75.77
DEPARTMENT: 11026 - BROADCASTING	0.00	0.00	0.00	500.00	500.00	100.00
DEPARTMENT: 11030 - ART	232.43-	11,585.22	24,086.12	138,883.00	115,029.31	82.82
DEPARTMENT: 11031 - DRAMA	0.00	5,385.91	11,413.37	76,541.00	65,127.63	85.09
DEPARTMENT: 11032 - VOCAL MUSIC	0.00	7,006.80	13,965.72	85,010.00	71,044.28	83.57
DEPARTMENT: 11033 - INST MUSIC	6,342.00-	9,818.30	34,601.89	101,349.00	73,089.11	72.12
DEPARTMENT: 11040 - SCIENCE	416.34	32,499.76	63,118.30	368,115.00	304,580.36	82.74
DEPARTMENT: 11050 - MATH	0.00	27,599.47	65,161.29	281,490.00	216,328.71	76.85
DEPARTMENT: 11060 - SOCIAL SCIENCE	0.00	30,181.79	66,383.09	305,404.00	239,020.91	78.26
DEPARTMENT: 11070 - HEALTH & PHYSICAL	0.00	7,066.17	15,388.20	63,902.00	48,513.80	75.92
DEPARTMENT: 11071 - WELLNESS-SUPER CIR	0.00	5,261.78	16,602.31	79,943.00	63,340.69	79.23
DEPARTMENT: 11081 - READING	0.00	5,052.83	10,106.23	60,736.00	50,629.77	83.36
DEPARTMENT: 11082 - ESL	0.00	6,026.02	11,939.27	73,480.00	61,540.73	83.75
DEPARTMENT: 11083 - COLLEGE SKILLS	0.00	7,117.40	7,653.68	3,057.00	4,596.68-	150.36-
DEPARTMENT: 11090 - ACADEMIC CHALLENGE	0.00	413.98	413.98	2,325.00	1,911.02	82.19
DEPARTMENT: 11100 - TECHNOLOGY--INSTRU	2,105.76	56,614.61	209,862.05	612,170.00	400,202.19	65.37
DEPARTMENT: 12242 - CHALLENGE COURSE	0.00	0.00	269.13	0.00	269.13-	0.00
DEPARTMENT: 41000 - LIBRARY	706.09	14,357.57	47,262.25	188,072.00	140,103.66	74.49
DEPARTMENT: 41009 - COMPREHENSIVE LEAR	371.87	6,390.78	18,679.15	88,316.00	69,264.98	78.43
DEPARTMENT: 42000 - DEAN OF LEARNING S	265,626.42	9,841.08	25,492.26	1,016,174.00	725,055.32	71.35
DEPARTMENT: 42001 - DEAN OF ACADEMICS	4,333.00-	16,957.55	37,618.33	154,534.00	121,248.67	78.46
DEPARTMENT: 42002 - OUTREACH	0.00	1,820.83	6,474.20	94,293.00	87,818.80	93.13
DEPARTMENT: 44000 - INSTRUCTIONAL DESI	0.00	5,369.60	18,703.71	72,706.00	54,002.29	74.27
DEPARTMENT: 46000 - DEVELOPMENTAL EDUC	0.00	5,887.62	17,483.73	70,875.00	53,391.27	75.33
DEPARTMENT: 50000 - DEAN OF STUDENT SE	228.33-	33,748.81	83,557.25	312,199.00	228,870.08	73.31
DEPARTMENT: 50001 - STUDENT SUPPORT SE	0.00	0.00	0.00	13,225.00	13,225.00	100.00
DEPARTMENT: 50010 - COUNSELING & GUIDA	0.00	9,451.09	35,050.61	166,793.00	131,742.39	78.99
DEPARTMENT: 50011 - ASSESSMENT/TESTING	3,906.90	4,168.40	12,058.62	56,965.00	40,999.48	71.97
DEPARTMENT: 50020 - FINANCIAL AID OFFI	1,000.00-	22,847.65	64,955.95	353,866.00	289,910.05	81.93
DEPARTMENT: 50030 - ADMISSIONS	62.60-	11,774.03	42,302.30	155,378.00	113,138.30	72.81
DEPARTMENT: 50040 - REGISTRAR'S OFFICE	0.00	13,080.97	39,026.59	172,257.00	133,230.41	77.34
DEPARTMENT: 50050 - STUDENT HEALTH SER	154.28	6,140.58	16,184.24	70,690.00	54,351.48	76.89
DEPARTMENT: 55000 - DIRECTOR OF ATHLET	439.57-	44,453.31	307,803.76	777,484.00	470,119.81	60.47
DEPARTMENT: 55001 - MEN'S BASKETBALL	11,831.00	11,764.78	35,503.15	173,492.00	126,157.85	72.72
DEPARTMENT: 55002 - WOMEN'S BASKETBALL	9,844.00	15,504.99	40,254.38	158,338.00	108,239.62	68.36
DEPARTMENT: 55003 - MEN'S TRACK	13.50	3,764.89	12,279.97	67,480.00	55,186.53	81.78
DEPARTMENT: 55004 - WOMEN'S TRACK	176.66-	3,004.84	11,623.77	66,972.00	55,524.89	82.91
DEPARTMENT: 55005 - WOMEN'S SOFTBALL	4,915.08	10,377.55	28,871.38	123,115.00	89,328.54	72.56
DEPARTMENT: 55006 - FOOTBALL	6,082.46-	85,448.65	186,709.19	525,513.00	344,886.27	65.63
DEPARTMENT: 55007 - BASEBALL	7,372.63	10,713.05	34,758.05	161,311.00	119,180.32	73.88
DEPARTMENT: 55008 - VOLLEYBALL	0.00	8,397.87	23,749.00	109,292.00	85,543.00	78.27
DEPARTMENT: 55009 - WOMEN'S SOCCER	222.04	9,864.85	20,056.33	66,262.00	45,983.63	69.40
DEPARTMENT: 55010 - MEN'S SOCCER	222.03	8,569.90	18,340.36	65,781.00	47,218.61	71.78
DEPARTMENT: 55012 - CHEERLEADING	0.00	7,176.32	15,543.02	62,901.00	47,357.98	75.29

DEPARTMENT: 55013 - DANCE TEAM	0.00	3,810.31	10,305.71	42,250.00	31,944.29	75.61
DEPARTMENT: 55014 - RODEO TEAM	2,666.85	25,245.68	43,922.00	162,726.00	116,137.15	71.37
DEPARTMENT: 55015 - MEN'S GOLF	1,410.00	1,159.73	3,631.31	39,265.00	34,223.69	87.16
DEPARTMENT: 55019 - ATHLETIC TRAINING	46.24	22,240.48	45,679.50	135,915.00	90,189.26	66.36
DEPARTMENT: 55020 - PEP BAND	2,300.00-	7,933.45	18,325.85	60,037.00	44,011.15	73.31
DEPARTMENT: 61000 - PRESIDENT	2,109.65-	43,872.41	162,514.96	641,658.00	481,252.69	75.00
DEPARTMENT: 61001 - BOARD OF TRUSTEES	60.00	264.25	264.25	24,840.00	24,515.75	98.69
DEPARTMENT: 61005 - ATTORNEY	1,016.00-	11,718.53-	37,978.03	125,000.00	88,037.97	70.43
DEPARTMENT: 62000 - VP OF ADMIN SERVIC	4,080.20	141,149.87	287,651.68	1,341,012.00	1,049,280.12	78.25
DEPARTMENT: 62005 - DO NOT USE	0.00	0.00	0.00	0.00	0.00	0.00
DEPARTMENT: 62010 - HUMAN RESOURCES	98.16-	6,884.76	26,845.33	169,167.00	142,419.83	84.19
DEPARTMENT: 62011 - ADA COMPLIANCE	5,000.00	9,252.54	18,771.93	71,132.00	47,360.07	66.58
DEPARTMENT: 62050 - ONE-TIME PURCHASES	0.00	0.00	5,191.78	69,528.00	64,336.22	92.53
DEPARTMENT: 63000 - MARKETING/PR	9,595.00	23,245.67	36,673.16	155,610.00	109,341.84	70.27
DEPARTMENT: 64000 - INFORMATION TECHNO	1,384.57	74,154.01	315,003.29	628,448.00	312,060.14	49.66
DEPARTMENT: 65000 - CENTRAL SERVICES	884.00	9,038.78	30,979.99	141,665.00	109,801.01	77.51
DEPARTMENT: 67000 - INSTITUTION EFFECT	0.00	16,494.79	49,441.25	192,192.00	142,750.75	74.28
DEPARTMENT: 70000 - PHYSICAL PLANT ADM	1,021.71	17,436.19	36,661.71	167,943.00	130,259.58	77.56
DEPARTMENT: 71000 - BUILDINGS	14,536.62	43,787.50	105,724.57	432,002.00	311,740.81	72.16
DEPARTMENT: 72000 - CUSTODIAL SERVICES	1,063.47-	50,509.42	143,374.49	600,223.00	457,911.98	76.29
DEPARTMENT: 73000 - GROUNDS	6,460.43	22,351.43	62,890.85	322,642.00	253,290.72	78.51
DEPARTMENT: 73001 - ATHLETIC FIELDS	3,399.60	1,334.59	7,324.09	30,000.00	19,276.31	64.25
DEPARTMENT: 74000 - VEHICLES	6,530.31-	25,280.78	44,741.70	386,719.00	348,507.61	90.12
DEPARTMENT: 75000 - CAMPUS SECURITY	180.71-	12,183.22	32,772.84	193,980.00	161,387.87	83.20
DEPARTMENT: 76000 - INSURANCE	0.00	142.40-	183,007.84	254,659.00	71,651.16	28.14
DEPARTMENT: 77000 - UTILITIES	55,399.78-	74,267.09	211,899.29	830,000.00	673,500.49	81.14
DEPARTMENT: 81000 - BOOK SCHOLARSHIPS	0.00	22,739.90-	23,852.73-	0.00	23,852.73	0.00
DEPARTMENT: 81001 - TUIT WAIVER SEN CT	0.00	183.00-	1,403.00-	2,500.00	3,903.00	156.12
DEPARTMENT: 81002 - TUIT WAIVER EMPL/D	0.00	21,716.00	23,119.00	30,000.00	6,881.00	22.94
DEPARTMENT: 81003 - STATE MANDATED WAI	0.00	6,111.00	6,111.00	11,000.00	4,889.00	44.45
DEPARTMENT: 81004 - TUIT WAIVER CTZ IN	0.00	62,712.00	63,210.00	151,000.00	87,790.00	58.14
DEPARTMENT: 81006 - TUIT WAIVER FINE A	0.00	57,607.00	57,607.00	106,000.00	48,393.00	45.65
DEPARTMENT: 81007 - ACADEMIC SCHOLARSH	0.00	2,128.00	2,128.00	0.00	2,128.00-	0.00
DEPARTMENT: 94000 - STUDENT CENTER	102.00	8,617.59	11,169.11	36,000.00	24,728.89	68.69

---

FUND: 11 - GENERAL	270,853.59	1,420,587.21	3,966,900.03	15,962,157.00	11,724,403.38	73.45
--------------------	------------	--------------	--------------	---------------	---------------	-------

Fiscal Year: 2019

FUND: 12 - PTE FUND

GL Account	YTD Encumbrances	MTD Actual	YTD Actual	Annual Budget	Available	% Avail
DEPARTMENT: 12010 - ACCOUNTING	0.00	5,591.20	10,508.50	59,831.00	49,322.50	82.44
DEPARTMENT: 12011 - MID-MANAGEMENT & B	0.00	65.32	65.32	250.00	184.68	73.87
DEPARTMENT: 12012 - COMPUTER SCIENCE	0.00	5,782.28	9,418.29	43,709.00	34,290.71	78.45
DEPARTMENT: 12200 - ADN PROGRAM	3,178.97-	42,222.53	74,877.31	312,033.00	240,334.66	77.02
DEPARTMENT: 12201 - LPN PROGRAM	8,377.27-	35,564.31	70,835.84	293,410.00	230,951.43	78.71
DEPARTMENT: 12202 - EMT	181.15-	16,454.54	39,360.09	184,875.00	145,696.06	78.81
DEPARTMENT: 12203 - ALLIED HEALTH	2,710.00-	21,341.38	43,377.72	198,362.00	157,694.28	79.50
DEPARTMENT: 12210 - AGRICULTURE	1,607.24-	4,160.34	11,597.34	60,998.00	51,007.90	83.62
DEPARTMENT: 12211 - ANIMAL SCIENCE	2,241.49-	17,346.82	30,698.80	106,531.00	78,073.69	73.29
DEPARTMENT: 12220 - JOHN DEERE AG TECH	1,198.92-	12,758.28	26,463.79	180,517.00	155,252.13	86.00
DEPARTMENT: 12225 - OIL TECH PROGRAM	0.00	0.00	0.00	1,000.00	1,000.00	100.00
DEPARTMENT: 12230 - AUTO MECHANICS	600.00	19,408.51	24,961.90	85,756.00	60,194.10	70.19
DEPARTMENT: 12240 - CRIMINAL JUSTICE	3,000.00-	13,488.33	24,220.89	140,903.00	119,682.11	84.94
DEPARTMENT: 12241 - FIRE SCIENCE	837.55-	6,342.29	13,616.80	76,600.00	63,820.75	83.32
DEPARTMENT: 12250 - COSMETOLOGY	0.00	10,440.82	22,603.00	125,743.00	103,140.00	82.02
DEPARTMENT: 12260 - DRAFTING	0.00	0.00	0.00	200.00	200.00	100.00
DEPARTMENT: 12270 - AMMONIA REFRIGERAT	0.00	0.00	1,399.45	0.00	1,399.45-	0.00
DEPARTMENT: 12271 - AUTOMATION ELECTRI	0.00	0.00	0.00	1,750.00	1,750.00	100.00
DEPARTMENT: 12272 - INDUSTRIAL MAINTEN	0.00	0.00	0.00	43,951.00	43,951.00	100.00
DEPARTMENT: 12273 - WELDING	1,420.96-	26,207.05	56,810.04	259,917.00	204,527.92	78.69
DEPARTMENT: 42005 - DEAN OF TECHNICAL	4,637.41-	14,590.64	45,598.46	493,848.00	452,886.95	91.71
DEPARTMENT: 62050 - ONE-TIME PURCHASES	0.00	0.00	0.00	15,500.00	15,500.00	100.00
=====						
FUND: 12 - PTE FUND	28,790.96-	251,764.64	506,413.54	2,685,684.00	2,208,061.42	82.22

Fiscal Year: 2019

FUND: 14 - ADULT SUPPLEMENTARY ED

GL Account	YTD Encumbrances	MTD Actual	YTD Actual	Annual Budget	Available	% Avail
DEPARTMENT: 31000 - COMMUNITY SERVICE	0.00	490.25	2,119.43	42,669.61	40,550.18	95.03
DEPARTMENT: 55006 - FOOTBALL	0.00	0.00	0.00	280.00	280.00	100.00
DEPARTMENT: 55002 - WOMEN'S BASKETBALL	269.21	0.00	120.00	750.00	360.79	48.11
DEPARTMENT: 31000 - COMMUNITY SERVICE	0.00	24.00	624.00	2,138.17	1,514.17	70.82
DEPARTMENT: 55001 - MEN'S BASKETBALL	0.00	0.00	0.00	150.39	150.39	100.00
DEPARTMENT: 55000 - DIRECTOR OF ATHLET	0.00	0.00	0.00	297,852.30	297,852.30	100.00
DEPARTMENT: 55012 - CHEERLEADING	0.00	0.00	0.00	711.71	711.71	100.00
DEPARTMENT: 55008 - VOLLEYBALL	0.00	0.00	836.13	3,030.51	2,194.38	72.41
DEPARTMENT: 55005 - WOMEN'S SOFTBALL	1,726.00	1,936.98	1,936.98	17,936.77	14,273.79	79.58
DEPARTMENT: 31000 - COMMUNITY SERVICE	0.00	892.25	2,778.84	14,500.00	11,721.16	80.84
DEPARTMENT: 55007 - BASEBALL	1,184.96	546.00	4,790.00	12,000.68	6,025.72	50.21
DEPARTMENT: 55013 - DANCE TEAM	0.00	27.29	27.29	777.39	750.10	96.49
DEPARTMENT: 55009 - WOMEN'S SOCCER	0.00	0.00	0.00	1,768.22	1,768.22	100.00
DEPARTMENT: 55003 - MEN'S TRACK	0.00	0.00	0.00	712.98	712.98	100.00
=====						
FUND: 14 - ADULT SUPPLEMENTARY ED	3,180.17	3,916.77	13,232.67	395,278.73	378,865.89	95.85

Fiscal Year: 2019

FUND: 16 - AUXILIARY ENTITIES

GL Account	YTD Encumbrances	MTD Actual	YTD Actual	Annual Budget	Available	% Avail
DEPARTMENT: 31000 - COMMUNITY SERVICE	2,781.59-	7,027.02	13,847.92	22,615.00	11,548.67	51.07
DEPARTMENT: 94000 - STUDENT CENTER	2,845.72	1,743.00	3,388.15	218,091.00	211,857.13	97.14
DEPARTMENT: 95000 - STUDENT HOUSING	34,097.18-	280,303.07	570,162.19	2,723,630.00	2,187,564.99	80.32
DEPARTMENT: 98000 - COSMETOLOGY	2,024.64	38,428.80	43,115.20	126,144.00	81,004.16	64.22
DEPARTMENT: 97000 - BOOKSTORE	19,109.12	37,140.91	99,549.07	434,925.00	316,266.81	72.72
DEPARTMENT: 91000 - ARENA	280.66-	0.00	0.00	0.00	280.66	0.00
=====						
FUND: 16 - AUXILIARY ENTITIES	13,179.95-	364,642.80	730,062.53	3,525,405.00	2,808,522.42	79.67

Fiscal Year: 2019

FUND: 22 - RESTRICTED GRANTS

GL Account	YTD Encumbrances	MTD Actual	YTD Actual	Annual Budget	Available	% Avail
DEPARTMENT: 50000 - DEAN OF STUDENT SE	8,745.00	178.01	178.01	13,000.00	4,076.99	31.36
DEPARTMENT: 11100 - TECHNOLOGY--INSTRU	0.00	0.00	0.00	16,573.00	16,573.00	100.00
DEPARTMENT: 13301 - ADULT ED - INSTRUC	0.00	0.00	0.00	4,193.80	4,193.80	100.00
DEPARTMENT: 12273 - WELDING	0.00	3,407.10	17,406.57	123,359.25	105,952.68	85.89
DEPARTMENT: 14010 - AO-K	0.00	0.00	685.00	2,058.58	1,373.58	66.72
DEPARTMENT: 42000 - DEAN OF LEARNING S	23.05	70.93	93.53	275.19	158.61	57.64
DEPARTMENT: 50000 - DEAN OF STUDENT SE	0.00	776.24	1,776.24	1,776.24	0.00	0.00
DEPARTMENT: 42000 - DEAN OF LEARNING S	0.00	0.00	0.00	1,489.76	1,489.76	100.00
DEPARTMENT: 50000 - DEAN OF STUDENT SE	1,533.82	8,415.33	89,097.01	100,106.30	9,475.47	9.47
DEPARTMENT: 42000 - DEAN OF LEARNING S	0.00	0.00	0.00	2,585.41	2,585.41	100.00
DEPARTMENT: 13301 - ADULT ED - INSTRUC	0.00	0.00	0.00	8,520.00	8,520.00	100.00
DEPARTMENT: 11040 - SCIENCE	0.00	0.00	2,798.90	33,526.02	30,727.12	91.65
DEPARTMENT: 00000 - GENERAL	0.00	0.00	0.00	13,225.00-	13,225.00-	100.00
DEPARTMENT: 50000 - DEAN OF STUDENT SE	0.00	19,529.63	19,529.63	316,206.00	296,676.37	93.82
DEPARTMENT: 42000 - DEAN OF LEARNING S	0.00	4,741.40	14,223.90	60,424.00	46,200.10	76.46
DEPARTMENT: 11040 - SCIENCE	0.00	5,552.00	9,642.70	53,352.00	43,709.30	81.93
DEPARTMENT: 42005 - DEAN OF TECHNICAL	8,692.12	1,478.57	2,598.91	71,481.00	60,189.97	84.20
=====						
FUND: 22 - RESTRICTED GRANTS	18,993.99	44,149.21	158,030.40	795,701.55	618,677.16	77.75

FUND: 23 - OTHER RESTRICTED FUNDS

GL Account	YTD Encumbrances	MTD Actual	YTD Actual	Annual Budget	Available	% Avail
DEPARTMENT: 31000 - COMMUNITY SERVICE	0.00	0.00	0.00	16,797.94	16,797.94	100.00
=====						
FUND: 23 - OTHER RESTRICTED FUNDS	0.00	0.00	0.00	16,797.94	16,797.94	100.00



Fiscal Year: 2019

FUND: 24 - ADULT EDUCATION

GL Account	YTD Encumbrances	MTD Actual	YTD Actual	Annual Budget	Available	% Avail
DEPARTMENT: 13301 - ADULT ED - INSTRUC	0.00	0.00	137.60	0.00	137.60-	0.00
DEPARTMENT: 13305 - ADULT ED - STAFF D	0.00	0.00	0.00	0.00	0.00	0.00
DEPARTMENT: 13301 - ADULT ED - INSTRUC	172.71-	2,303.71	7,139.83	135,196.84	128,229.72	94.85
DEPARTMENT: 13305 - ADULT ED - STAFF D	0.00	0.00	0.00	9,901.55	9,901.55	100.00
DEPARTMENT: 13301 - ADULT ED - INSTRUC	16,779.52-	17,305.25	53,857.87	162,461.00	125,382.65	77.18
DEPARTMENT: 13305 - ADULT ED - STAFF D	0.00	1,179.84	1,547.09	4,874.00	3,326.91	68.26
DEPARTMENT: 13301 - ADULT ED - INSTRUC	0.00	8,569.83	25,825.23	121,366.00	95,540.77	78.72
DEPARTMENT: 42005 - DEAN OF TECHNICAL	0.00	11,007.74	14,042.20	0.00	14,042.20-	0.00
DEPARTMENT: 00000 - GENERAL	0.00	0.00	0.00	37,500.00-	37,500.00-	100.00
DEPARTMENT: 13301 - ADULT ED - INSTRUC	99.99	2,700.99	6,709.18	37,500.00	30,690.83	81.84
=====						
FUND: 24 - ADULT EDUCATION	16,852.24-	43,067.36	109,259.00	433,799.39	341,392.63	78.70

Fiscal Year: 2019

FUND: 61 - CAPITAL OUTLAY

GL Account	YTD Encumbrances	MTD Actual	YTD Actual	Annual Budget	Available	% Avail
DEPARTMENT: 64000 - INFORMATION TECHNO	0.00	0.00	15,965.00	15,965.00	0.00	0.00
DEPARTMENT: 71000 - BUILDINGS	137,155.37-	0.00	147,992.75	984,035.00	973,197.62	98.90
=====						
FUND: 61 - CAPITAL OUTLAY	137,155.37-	0.00	163,957.75	1,000,000.00	973,197.62	97.32

Fiscal Year: 2019

FUND: 71 - ACTIVITY/ORGANIZATION FD

GL Account	YTD Encumbrances	MTD Actual	YTD Actual	Annual Budget	Available	% Avail
DEPARTMENT: 50000 - DEAN OF STUDENT SE	22,570.42	101,389.35	171,328.02	437,801.00	243,902.56	55.71
DEPARTMENT: 55001 - MEN'S BASKETBALL	0.00	0.00	0.00	500.00	500.00	100.00
DEPARTMENT: 55002 - WOMEN'S BASKETBALL	0.00	0.00	0.00	500.00	500.00	100.00
DEPARTMENT: 55003 - MEN'S TRACK	0.00	0.00	0.00	500.00	500.00	100.00
DEPARTMENT: 55004 - WOMEN'S TRACK	0.00	0.00	0.00	500.00	500.00	100.00
DEPARTMENT: 55005 - WOMEN'S SOFTBALL	0.00	0.00	0.00	500.00	500.00	100.00
DEPARTMENT: 55006 - FOOTBALL	0.00	0.00	0.00	2,500.00	2,500.00	100.00
DEPARTMENT: 55007 - BASEBALL	0.00	0.00	0.00	500.00	500.00	100.00
DEPARTMENT: 55008 - VOLLEYBALL	0.00	0.00	0.00	500.00	500.00	100.00
DEPARTMENT: 55009 - WOMEN'S SOCCER	0.00	0.00	0.00	500.00	500.00	100.00
DEPARTMENT: 55010 - MEN'S SOCCER	0.00	0.00	0.00	500.00	500.00	100.00
DEPARTMENT: 55012 - CHEERLEADING	0.00	0.00	0.00	500.00	500.00	100.00
DEPARTMENT: 55013 - DANCE TEAM	0.00	0.00	0.00	500.00	500.00	100.00
DEPARTMENT: 55014 - RODEO TEAM	0.00	0.00	0.00	500.00	500.00	100.00
DEPARTMENT: 55015 - MEN'S GOLF	0.00	0.00	0.00	500.00	500.00	100.00
DEPARTMENT: 99001 - STUDENT NEWSPAPER	0.00	0.00	3,341.18	33,700.00	30,358.82	90.09
DEPARTMENT: 50000 - DEAN OF STUDENT SE	0.00	151.13-	288.87	6,800.00	6,511.13	95.75
=====						
FUND: 71 - ACTIVITY/ORGANIZATION FD	22,570.42	101,238.22	174,958.07	487,301.00	289,772.51	59.46

GL Account	YTD Encumbrances	MTD Actual	YTD Actual	Annual Budget	Available	% Avail
DEPARTMENT: 55001 - MEN'S BASKETBALL	0.00	1,728.00	1,728.00	44,000.00	42,272.00	96.07
DEPARTMENT: 55002 - WOMEN'S BASKETBALL	0.00	500.00	500.00	44,000.00	43,500.00	98.86
DEPARTMENT: 55003 - MEN'S TRACK	0.00	3,444.00	3,444.00	25,000.00	21,556.00	86.22
DEPARTMENT: 55004 - WOMEN'S TRACK	0.00	4,277.00	4,277.00	25,000.00	20,723.00	82.89
DEPARTMENT: 55005 - WOMEN'S SOFTBALL	0.00	0.00	0.00	35,000.00	35,000.00	100.00
DEPARTMENT: 55006 - FOOTBALL	0.00	3,653.00	3,653.00	155,000.00	151,347.00	97.64
DEPARTMENT: 55007 - BASEBALL	0.00	1,680.00	1,680.00	40,000.00	38,320.00	95.80
DEPARTMENT: 55008 - VOLLEYBALL	0.00	886.00	886.00	30,000.00	29,114.00	97.05
DEPARTMENT: 55009 - WOMEN'S SOCCER	0.00	8,606.00	8,606.00	30,000.00	21,394.00	71.31
DEPARTMENT: 55010 - MEN'S SOCCER	0.00	3,260.00	3,260.00	30,000.00	26,740.00	89.13
DEPARTMENT: 55012 - CHEERLEADING	0.00	15,500.00	15,500.00	20,000.00	4,500.00	22.50
DEPARTMENT: 55013 - DANCE TEAM	0.00	3,384.00	3,384.00	10,000.00	6,616.00	66.16
DEPARTMENT: 55014 - RODEO TEAM	0.00	7,487.00	7,487.00	32,000.00	24,513.00	76.60
DEPARTMENT: 55015 - MEN'S GOLF	0.00	0.00	0.00	11,000.00	11,000.00	100.00
DEPARTMENT: 55019 - ATHLETIC TRAINING	0.00	9,098.00	9,098.00	28,000.00	18,902.00	67.51
DEPARTMENT: 11025 - JOURNALISM	0.00	1,147.00	1,147.00	11,000.00	9,853.00	89.57
DEPARTMENT: 11030 - ART	0.00	4,800.00	4,800.00	12,000.00	7,200.00	60.00
DEPARTMENT: 11031 - DRAMA	0.00	5,875.00	5,875.00	9,000.00	3,125.00	34.72
DEPARTMENT: 11032 - VOCAL MUSIC	0.00	6,125.00	6,125.00	15,000.00	8,875.00	59.17
DEPARTMENT: 11033 - INST MUSIC	0.00	34,589.00	34,589.00	80,000.00	45,411.00	56.76
DEPARTMENT: 11090 - ACADEMIC CHALLENGE	0.00	5,721.00	5,721.00	5,000.00	721.00	14.41
DEPARTMENT: 12211 - ANIMAL SCIENCE	0.00	12,330.00	12,330.00	20,000.00	7,670.00	38.35
DEPARTMENT: 81005 - TUIT WAIVER FCHS	0.00	10,272.00	10,272.00	21,000.00	10,728.00	51.09
DEPARTMENT: 81007 - ACADEMIC SCHOLARSH	0.00	4,314.00	4,314.00	11,000.00	6,686.00	60.78
=====						
FUND: 72 - ACTIVITY FEE - SCHOLARSHIPS	0.00	148,676.00	148,676.00	743,000.00	594,324.00	79.99

Garden City Community College  
9/30/2018

	<u>Amount</u>	<u>% Rate</u>
Cash in Bank:		
Commerce Bank	\$ 120,465.37	0.0000%
State Municipal Invest. Pool	\$ 125,408.89	1.5000%
Landmark National Bank	<u>\$ 2,385,021.96</u>	1.9300%
	<u>\$ 2,630,896.22</u>	

	<u>Type</u>	<u>Amount</u>	<u>% Rate</u>	<u>Beg. Date</u>	<u>Maturity</u>
Investments:					
American State Bank	CD	\$ 1,000,000.00	1.4800%	11/9/2017	11/9/2018
Commerce Bank	CD	\$ 1,000,000.00	1.8500%	5/17/2018	11/17/2018
American State Bank	CD	\$ 1,000,000.00	2.1200%	6/22/2018	12/22/2018
FNB of Garden City	CDARS	\$ 1,000,000.00	1.8700%	1/26/2018	1/26/2019
FNB of Garden City	CDARS	\$ 1,000,000.00	2.3800%	8/8/2018	2/8/2018
Commerce Bank	CD	\$ 1,000,000.00	1.9000%	2/13/2018	2/13/2019
American State Bank	CD	<u>\$ 1,000,000.00</u>	2.3600%	6/22/2018	6/22/2019
		<u>\$ 7,000,000.00</u>			
Total		<u><u>\$ 9,630,896.22</u></u>			

Topic: Approval of Wireless Access and Cameras"

Presenter: Korytko "T {cp"Twf c"

Background Information:"

Qwt'r t gugpv'y kt gruu'eqpvqngt 'ku"qduqngvg"cpf 'pq"mqpi gt "uwr r qtvgf "d { 'vj g'o cpwcewtgt0K'ecppqv'dg" tgr cktgf 'y j gp'k'hcku0Hckwtg'y qwf "o gcp'cm'y kt gruu'kpgtpgv'ceegui'y qwf "dg'f qy p'kpf ghkpgn(0' Y g'ctg'r tqr qukpi 'r wtej cukpi 'cpf 'ko r ngo gpvki ": 7'Eco gtcu'y kj "ceegui'r qkpw.'vj gug'y kni q'cv'y g'f qqtu" qh'gxt { "dwkf kpi 'hqt'uwtxgkmpg"cpf ": 2'T gi wrct "ceegui'r qkpw'q'ko r tqxg"eco r wu'y kt gruu'eqppgevkp0'

Budget Information:

I gpgtclHwpf "" " 882.: 38073" T gukf gpvkiNkxg"Cwzkrct { " &4; .59906"

Recommended Board Action:"

Cr r tqxg'vj g'r wtej cug"qh"Y kt gruu'Ceegui'r qkpw"cpf "Eco gtcu'htqo "P gy qtmEqo r wgt "Uqnwkqpu"cu" tghgevgf "k"vj gk "dkf 0' \*dkf 'uj ggu'cwcej gf +"

Board Action Taken: \_\_\_\_\_Approved \_\_\_\_\_Disapproved"

\_\_\_\_\_ Ayes \_\_\_\_\_ Nays

Board Member Notes:"

## Board Report

Our present wireless controller is obsolete and no longer supported by the manufacturer. It cannot be repaired when it fails. Failure would mean all wireless internet access would be down indefinitely.

The current Enterasys C4110 hardware wireless controller will be completely “end of support” on 12/31/2018. This means Extreme Networks will no longer be able to provide support with software or hardware on the device if any issues were to arise after that date. In anticipation of this, we purchased and implemented a new Extreme Networks V2110 virtual wireless controller in May of 2017.

Our current access points will also no longer be supported after March 2020. The new V2110 virtual wireless controller requires new access points with a minimum version of 10.0. The old access points cannot be used on the new wireless controller. We are proposing purchasing and implementing 85 Cameras with access points, these will go at the doors of every building for surveillance and 80 Regular access points to improve campus wireless connection.

In addition to the required replacement of the hardware controller, the campus will receive many benefits from the wireless upgrade. Wireless band AC, which most phones and wireless devices now come with, will work much better on the network as the old access points did not support this band. These new access points will also better support having hundreds of devices connected to them along with the increased bandwidth needed. The amount of devices connecting to our wireless network has greatly increased since the original implementation of the wireless controller and access points. We are currently seeing over 2500 wireless devices connected at any given time.

The attached bid sheets will show two models of access points. The Extreme Networks AP3916i is a dual combination access point and camera in one device. The Ap3916i will be implemented at all external entrance ways and dorm hallways across campus to provide wireless and security camera footage. Adding these combination camera/access points will greatly improve our campus security.

The AP3935i is an 8 antenna access point that will be used to provide additional coverage that the Ap3916i cannot reach and where a security camera is not required.

Extreme Networks AP 3916i  
Dual Combination Camera  
and Access Point



Extreme Networks AP3935i



## Technical Specifications

### AP3935i (Proposed access point)

Number of radios	2
Maximum Throughput 2.4 GHz Radio	800 Mbps
Maximum Throughput 5 GHz Radio	1.733 Gbps
Maximum Throughput per AP	2.532 Gbps
Simultaneous Users per Radio/Total	240/480

### AP3916i (Proposed camera/access point)

Number of radios	2
Maximum Throughput 2.4 GHz Radio	300 Mbps
Maximum Throughput 5 GHz Radio	867 Mbps
Maximum Throughput per AP	1.166 Gbps
Simultaneous Users per Radio/Total	240/480

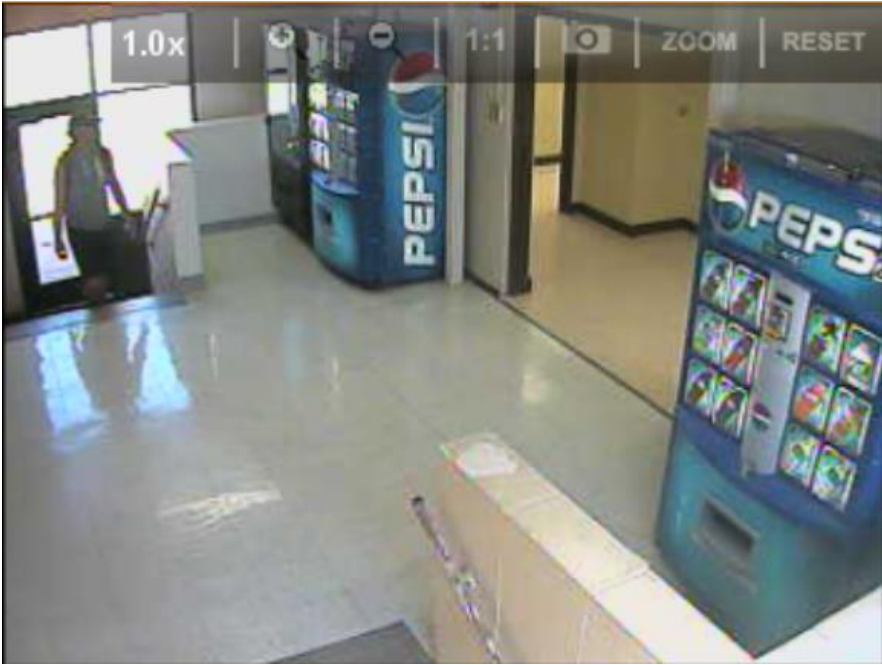
### AP3610 (Old Access points for comparison)

Number of radios	2
Maximum Throughput 2.4 GHz Radio	300 Mbps
Maximum Throughput 5 GHz Radio	300 Mbps
Maximum Throughput per AP	600 Mbps
Simultaneous Users per Radio/Total	127/254

## Security Camera Comparison

Cisco SD IP Camera Indoor Dome 2420 Series	Extreme Networks AP3916i
Resolution – 720 x 480 (480p, 0.35 MP)	1920 x 1080 (1080P, 2 MP)
Infrared Night vision - No	Infrared Night vision – Yes
End-of-Support Date: 2016-07-15	Not announced

Old Camera's Image Quality







New Camera's Image Quality







# Network Computer Solutions

PO Box 852  
Manhattan, KS 66505

785-776-9088

## Bid Proposal

Date	Estimate #
10/3/2018	10797

<b>Name / Address</b>
Garden City Community College 801 Campus Dr Garden City, KS 67846

	Bid Number	Job #
Description	Qty	Total
Network Refresh Bid		
31034 - WS-AP3916ic-FCC Dual Radio Cloud-Ready 802.11ac/abgn Wave 2x2:2 MIMO Indoor Access Point with Four Internal Antenna Array Integrated BLE/802.15.4 Radio & Integrated Video Camera (Requires Extrem	85	43,518.94
WS-AP3935j-FCC (US Puerto Rico Colombia) - Dual Band Radio 802.11 ac/abgn 4x4:4 MIMO Indoor Wave 2 Access Point with Eight Internal Antenna Array & Active/Active E/N Data Ports (Requires V10.01 or	80	44,095.50
WLAN Controller Capacity Upgrade for C25 & V2110 (Increases Capacity of WLAN Controller by 16 Access Points)	2	2,352.38
97003-S20255 EW Software Subscription - S20255	2	326.73
* This is an equipment only bid. No labor is included on this bid, but is available upon request.		
<b>Subtotal</b>		\$90,293.55
<b>Sales Tax (8.95%)</b>		\$0.00
<b>Total</b>		\$90,293.55

\*NCS return policy is governed by our distributors. Any returned item opened or factory seal broken will not be accepted. Restocking and/or shipping fees will be applied.



### Quote # KCKX169

Description: 80 X 3935I

Created Date: 09/18/18

Status: Open

Expiration Date: 12/22/18

Requested By: ANDREW KNOLL

Customer Notes:

**Ship to:**

GARDEN CITY COMMUNITY COLLEGE  
ANDREW KNOLL  
801N CAMPUS DR  
GARDEN CITY , KS 67846-6333

**Billed to:**

GARDEN CITY COMMUNITY COLLEGE  
ATTN: ACCTS PAYABLE  
801N CAMPUS DR  
GARDEN CITY , KS 67846-6333  
(620) 276-9631

**Shipping method:**

Drop Ship Ground

**Payment method:**




Net 30 Days--Govt/Ed

### Quote Summary

Subtotal	\$98,145.91
*US Tax	\$0.00
Shipping	\$0.00
<b>Grand Total</b>	<b>\$98,145.91</b>

\*Tax may change if this quote is amended by your account manager.

### Product Details

Item	Availability	Price	Quantity	Item Total
 <p><b>Extreme Networks ExtremeWireless AP3935i Indoor Access Point - wireless acc</b> MFG Part: 31012 CDW Part: 3921678 UNSPSC: 43223108</p>	<p><span style="color: green;">In Stock</span> Ships same day if ordered before 4pm CT</p>	<p><b>\$597.50</b> Pricing Option Applied: MARKET</p>	80	<b>\$47,800.00</b>
 <p><b>Extreme Networks ExtremeWireless 3916i Indoor Camera Access Point - wirele</b> MFG Part: 31034 CDW Part: 4443724 UNSPSC: 43223108</p>	<p><span style="color: green;">In Stock</span> Ships same day if ordered before 4pm CT</p>	<p><b>\$561.93</b> Pricing Option Applied: MARKET</p>	85	<b>\$47,764.05</b>
 <p><b>Extreme Networks WLAN controller capacity upgrade</b> MFG Part: WS-APCAP-16 CDW Part: 4495914 UNSPSC: 43233204</p> <p>Electronic distribution - NO MEDIA</p>	<p><span style="color: green;">In Stock</span> Ships same day if ordered before 4pm CT</p>	<p><b>\$1,290.93</b> Pricing Option Applied: KANSAS NVP SOFTWARE</p>	2	<b>\$2,581.86</b>

This page was printed on 10/3/2018 8:12:13 AM.

**Agenda No: II-E**

**Date: October 9, 2018"**

**Topic:** Tgxkukp"qh'Cr r qkpo gpw"

**Presenter:** Kpvtko "Rt gukf gpv'T {cp'Twf c"

**Background Information:"**

Y kj "vj g'tguki pcvkqp"qh'vj g'Ej lgh'Hppepekn'Qhleg IXleg'Rt gukf gpv'qh'Dwukpguu'Chcktu."vj g"  
hqmgy kpi "tgxkukpu'ctg'awi i guvgf 0'

Cwj qtk gf "Uki pcwtg'i í í í í í í í í í í í í í í í í í í "T {cp'Twf c"  
Eqmgi g"Vtgcuwgtí í í í í í í í í í í í í í í í í í í 0000F gdtc"Plej quqp"

**Budget Information:"**

**Recommended Board Action:"**

Ceegr v'cpf "cr r tqxg"vj g'awi i guvgf "tgxkukp"q"cr r qkpo gpw"

**Board Action Taken:**                  Approved       Disapprove  
         Ayes                  Nays       No Action"

**Board Member Notes:"**

# OCTOBER 2018 MONITORING REPORT

<p><b>ENDS"</b>  <b>Work Preparedness"</b>      <b>#1"</b></p>	<p style="text-align: right;"><b>SEMI-ANNUAL"</b>  <b>Page 5"</b></p>
<p><b>1. Students will have the skills and knowledge required for successful entry into the workplace."</b></p> <p><b>2. Students will have the work ethics, discipline and collaborative skills necessary to be successful in the workplace."</b></p> <p><b>3. Students will have the skills and knowledge necessary to maintain, advance or change their employment or occupation."</b></p>	

**CEO's Interpretation:"**

Uwf gpw'ucnkp i "egt vkecvg"cpf "f gi tgg'r tqi tco u'cv'I EEE'y knj cxg'yj g'vgej plecn'unkm"cpf " uqh'unkm"pgeguuct { "v"gpvgt'yj g'y qtnhteg0Vj g'vckpki "r tqxkf gf "v"uwf gpw"pqtqmgf "kp" eqwtugu"cpf "r tqi tco "ewtkew:wr i tcf g'unkm'y kj "lpf wut { "ucpf ctf "r tcevegu"cpf "cmqy " r gqr rg"v"i ckp'unkm"pgeguuct { "v"o ckpckp."cf xcpeg"qt "ej cpi g'yj gkt "ectggt0

**1. Students will have the skills and knowledge required for successful entry into the workplace."**

Uwf gpw'ucwpgf kpi "I ctf gp'Ekv{ 'Eqo o wpkv{ 'Eqmgi g'r tqi tco u'hqewu"qp"eqppgevkpi "yj gqt { "cpf "tgen' y qtrf "cr r hcevkqpu"yj tqwi j "yj g'wug"qh'xctkqwu"o gjj qf u"qh'kpwtwekqp0Vj qug'o gjj qf u'kpenw g'hgewtg." qp/eco r wu'rdu."qpukg'kpvgtpuj kr u."cpf "enplecn'tqvcvkqpu0Uqo g'gzco r ngu"qh'xctkqwu"vckpki u" uwf gpw"o c { "dg"gzr qugf "v"kpenw g<

- " Enplecn'tqvcvkqpu"cv'xctkqwu"j qur kcn'lp"yj g'tgi kqp"
- " Kpvgtpuj kr u'cv'Go gti gpe { "O gf lecn'Ugtxlegu'mecvkqpu"lp"yj g'tgi kqp"
- " Kpvgtpuj kr u'cv'Laj p'F ggtg'f gcrgtuj kr u'yj tqwi j qw'vj g'O kf y guv'
- " Qp/eco r wu'eqo r wgt'rdu"
- " Qp/eco r wu'uekgpeg'rdu"
- " Hwm' hmpvkqkpi "o gcw'r tqeguukpi "rd"qp"eco r wu"
- " Ucvg/qh'vj g/ctv'pwukpi "uko wrcvkp"rd"qp"eco r wu"
- Tgen'rhg"qp/eco r wu'equo gvqmi { "ugtxlegu'ctgc"
- " Qp/eco r wu'ecf cxgt"rd"
- " Qp/eco r wu'ikxg"dwtp"vy gt"

Vj g'Eqmgi g'cnuq'wkkk gu'uko wcvgf "cpf "qp/vj g/lqd'uegpctkqu'y j kej 'r tqxkf g'uwwf gpw'y kj 'y g" qrr rqtwpkv{ "vq'tgcej "cp"öcr r rkecvkqpo'rgxgn'qh'hgctpkpi 'd{ 'y qtnkpi 'y kj "go r mq {gtu.'hcewm{."cpf " qp/ukvg'uwr gtxkuqtu'vq'ko r ngo gpv'vj gqt { "vq'r tcevekgo'

Hcewm{ 'kp'r tqi tco u'vj cv'qh'gt'qhh'eco r wu'kpvgtpuj kr u'qt'erkplecn'tqvcvkpu'y qtnkxgt { "enqugn{ " y kj "go r mq { ggu'cv'vj qug'ukgu'vq'gpwvtg'r tqr gt "qxtguki j v'cpf "uwwf gpv'uwr gtxkukqp<

- P wtuksi 'kputwevtu'ceeqr r cp { "uwwf gpw'lp'vj g'erkplecn'ugwksi 'y j kg'y qtnkpi "cmipi ukf g" vj g'uwwf gpw'cpf "pwtukpi 'r tqh'guukqpcnu'vq'r tqxkf g'uwwf gpw'cp'qr vko cni'ngctpkpi "

- Rctco gf ke'uwwf gpw'eqo r ngvg'erkplecn'tqvcvkpu'lp'vj g'j qur kcn'ugwksi "cu'y gni'cu" kpvgtpuj kr u'cv'tgi kqpcn'co dwcpeg'ugt xlegu0Rtgegr vtu'cv'gcej "qh'vj qug'ukgu'tgegkxg" r tgegr vqt'tckpkpi 'r tqxkf kpi 'kphqto cvkqp"qp'uwwf gpv'gZR gevckqpu'cpf 'vj g'unkm'rgxgnu'cv" y j kej 'y g{ 'ctg'cmqy gf "vq'r gthqto 0Rtgegr vtu'vj gp'hkm'qw'cp'gxcnvcvkqp"qp'vj g'uwwf gpv' cv'vj g'gpf "qh'gcej 'uj kn'cpf 'tgwtp'k'vq'vj g'kputwevt'vq'tcen'uwwf gpv'r tqi tguu" vj tqwi j qw'vj g'r tqi tco 0'

- Lqj p'F ggtg'uwwf gpw'eqo r ngvg'y q'ugr ctcvg'kpvgtpuj kr u'cv'vj g'hqecnf gcrgtuj kr u'htqo " y j kej 'y g{ 'ctg'ur qpuqtgf 0F wtkpi 'vj cv'r gkqf "qh'vko g.'y g'kputwevt'eqo r ngvg'u'f gcrgt" xkuku'kp'y j kej 'j g'tcxgnu'vq'gcej 'f gcrgtuj kr "vq'o ggvy kj 'y g'ugt xleg'o cpci gtu'cpf " r tgegr vtu'vq'f kuewu'uwwf gpv'r tqi tguu0"

- Xctkqu'qyj gt 'kputwevtu'xkuk'ukgu'cv'y j kej 'uwwf gpw'ctg'eqo r ngvksi 'kpvgtpuj kr u'0'F wtkpi " vj gug'xkuku.'I EEE 'kputwevtu'f kuewu'uwwf gpv'r tqi tguu'cpf "eqpegtpu'y kj "go r mq {gtu0'

Kp'cf f kkkp'vq'hcewm{ 'r j { ukecm{ 'xkukksi "go r mq {gtu'vq'f kuewu'uwwf gpw."gcej "Ectggt"cpf " Vgej plecn'Gf wecvkqp'r tqi tco 'ku'tgs wktgf "vq'j qrf "cp'cf xkuqt { "eqo o kvgg'o ggvksi "gcej "ugo guvgt0 Cf xkuqt { 'Eqo o kvggu'eqpuku'qh'hqecnf'cpf 'tgi kqpcn'kpf wwt { 'r tqh'guukqpcnu'cmipi 'y kj "eqmgi g" kputwevtu.'j ki j 'uej qqn'kputwevtu.'eqmgi g'cf o kpkmtcvkqp"cpf "qyj gtu0Vj g'r wtr qug'qh'vj g" cf xkuqt { "eqo o kvggu'ku'vq'r tqxkf g'hggf dcm'vq'vj g'r tqi tco u'qp'pgy "tgpf u'kp'kpf wwt { ."uwwf gpv' uweeguugu'qt'eqpegtpu.'cpf 'tgeqo o gpf 'y c {u'vq'ko r tqxg'vj g'ewttgpv'r tqi tco "vq'dgwgt'o ggvy g" pggf u'qh'vj g'eqo o wkv{0Vj g'Eqmgi g'eqp'kpwu'vq'hqewu'gh'qtu'qp'vj gug'cf xkuqt { "eqo o kvgg" o ggvksi u'vq'gpwvtg'vj g'r tqr gt 'rgxgn'qh'hggf dcm'ku'i cy gtgf 'htqo 'hqecnf'cpf 'tgi kqpcn'

ucngj qrf gtu0"

""

**2. Students will have the work ethic, discipline and collaborative skills necessary to be successful in the workplace."**

Cmnr tqi tco u'go r j cuk g'vj g'ko r qtvpeg'qh'cwpgf cpeg. 'uc {kpi 'qp'cum'cpf 'r tqhguukqpcil' dgj cxkqt 'f wtkpi 'hgewtg.'rd. 'cpf 'uko wrcvgf 'gz gtekugu0' Cwpgf cpeg'i wkf grkp gu'ctg' hkuvgf 'kp'vj g' ewtgpv'423: /4242'Eqmgi g'Ecwmi '\*r ci g'44+<

- " Eqpukngpv'cwpgf cpeg'cv'I ctf gp'Ek{ 'Eqo o wkv{ 'Eqmgi g'ku'ustqpi n{ 'tgeqo o gpf gf 0'
- " Vj g'uwf gpv'ku'tgur qpukng'hqt'eqpvce'kpi 'gcej 'qh'j ku'qt'j gt'kputwexqtu'tgi ctf kpi " cp'cdugpeg0'
- " I EEE 'uwr rqtu'vj g'tki j v'qih'kputwexqtu'v'q'tgeqo o gpf 'y kj f tcy cnr tkqt 'v'vj g'r wdrkuj gf " y kj f tcy cnr cvg'qt 'v' hckl'cp { 'uwf gpv'y j qug'cdugpegu'ctg'gz'eguuk'g'kp'vj g'qr kpkqp'qh'vj cv' kputwexqt0'

Vj gtg'ctg'o wnr ng'r tqi tco u'y j q'j cxg'f gekf gf 'v'go r j cuk g'cwpgf cpeg'cpf 'r tqhguukqpcrkuo 'kp' vj gk'r tqi tco u'd { 'r mckpi 'eqpugs wpegu'qp'cdugpvggkuo 'cpf 'wpr tqhguukqpcrkuo 0Hqt'gz'co r ng." vj g'Rctco gf k'r tqi tco 'ku'tgs wktgf "d { 'vj g'Ucvg'qh'Mcpucu'v' tgs wktg'uwf gpw'v'q'cwpgf "c" o kpo wo 'qh'

; 2' 'qh'cm'encuu'uguukqpu0K'c'uwf gpv'hcmu'dgruy 'vj cv'o ctm'vj g { 'ctg'r megf 'qp'c'uwf gpv'eqpvcev' qwv'kpi 'c'r rcp'v'g'puwtg'cwpgf cpeg'kp'cm'encuu'uguukqpu'cpf 'kh'vj g { 'hckl'v'hw'knl'vj gk " qdrki cv'kpu.'vj g { 'ctg'tgo qxgf 'Htqo 'vj g'r tqi tco 0Uwf gpw'ctg'cnuq'kuwgf 'wphkqto u'cv'vj g'qpugv'qh' vj g'r tqi tco 'cpf 'vj g { 'ctg'tgs wktgf 'v'q'y gct'cr r tqr tkvg'cvktg'v'q'cm'enkplecrltqv'v'kpu.'hgrf " kpvgt'uj kr u'cu'y gm' cu'f wtkpi 'encuu'uguukqpu'qp'eco r wu0'Uwf gpw'cttkk'kpi 'kp'wpcr r tqxgf 'cvktg'o c { 'dg'ugpv' j qo g'v'ej cpi g'vj gk'eqvj kpi 0'"

Equo gvqmi { 'j cu'c'o kpo wo 'pwo dgt'qh'j qwtu'vj cv'ctg'tgs wktgf "d { 'vj g'Mcpucu'Dqctf 'qh' Equo gvqmi { 'hqt'cm'uwf gpw0K'kputwexqtu'kp'vj g'Equo gvqmi { 'f gr ctvo gpv'wkk' g'c'v'o g'eqem" y j lej 'cmuy u'uwf gpw'v'q'emek'kp'cpf 'emek'q'w'v'q'tceni'uwf gpv'cwpgf cpeg'cpf 'ctf kpguu0' Cwpgf cpeg'ku'c'r qt'v'kp'qh'vj g'uwf gpw'f tcf g'cu'y gm'cu'c'ucv'g'tgs wktgo gpv0K'c'uwf gpv'j cu'p'qv' eqo r rgyf 'c'o kpo wo 'qh'3722'emek'ij qwtu.'vj g { 'ctg'tgs wktgf 'v'q'eqpv'kw'g'kp'vj g'r tqi tco 'kp'c" ugo kpc't'ugw'kpi 'wv'k'ij g { 'j cxg'cv'ckp'gf 'vj g'tgs wktgf 'pwo dgt'qh'j qwtu0'Uwf gpw'ctg'cnuq'tgs wktgf " v'q'cdkf g'd { 'c'ut'lev'f tgu'eqf g'cv'cm'v'o gu'cpf 'ctg'ugpv'j qo g'kh'vj g { 'eqo g'v'q'encuu'q'w'qh'wphkqto 0'



Y grf kpi 'j cu'cuq'ko r ngo gpv'f 'c'ko g'ememlu{ungo . 'kp'y j lej 'uwf gpv'ememkp'cpf 'qvw'gej 'f c { " lwa'cu'y g { 'y qwf 'kp'c'y qtn'ugw'kpi 0'Vj gk 'ko gectf u'ctg'wugf 'v' 't'ceni'cwpgf cpeg'cpf 'actf kpguu'cu" y gni'cu'kpenf gf "cu'r ctv'qh'y gk 'i tcf g'ht 'y g'eqwtug'Uwf gpv'y cv'cttk'g'rcv'g'v' 'ercuu't gegk'g'c" -20'ht 'y g'f c { "qp'y gk 'cwpgf cpeg'cpf 'r ctv'ekr cv'kqp'r qt'kqp'qh'y gk 'i tcf g'0' k'p'tgur qpug'v' 'h'ecnl'kpf wut { 'pggf u.'cpq'y g' 'cf f'k'k'k'p'v' 'y g'ewtlew'w' 'ht 'y g'eco r wu'kpenf gu'c" eqwtug'ecmgf 'Ect'ggt 'Uweegu'y j lej 'h'ewugu'qp'r tqx'k'f kpi 'uwf gpv'y k'j 'y g'un'ku'y g { 'pggf 'v' 'gpv'gt' y g'y qtn'ht'eg'eq'ph'f gpv' { 'cpf 'eqo r g'v'p'v' { 0'Vj g'eqwtug'j ki j rki j w'un'ku'k'p'v' g'ct'gcu'qh'cwpgf cpeg." co d'k'k'p.'cr r gct'cpeg.'cpf 'ceegr v'peg.'lwa'v'q'pco g'c'hy 0'Vj g'g'y g'g'cr r tqz'ko cv'gn { "34/37" uge'v'k'pu'qh'y ku'eqwtug'v'w' j v'k'p'y g'r cu'ec'ng'p'f ct { 'gct' 'cpf 'eq'p'v'k'p'g'f 'uwf gpv'ht'qo 'cet'qu'eco r wu." kpenf kpi 'i gp'gt'c'ng'f we'cv'k'p' 'cpf 'v'gej p'lec'n'g'f we'cv'k'p'r tqi tco u'0' H'k'p'c'n'g'z'co k'p'cv'k'pu' 'cpf l'qt'r tq'lgew'ct'g't'gs w'k'g'f 'ht 'cm'ercu'ugu'0'Vj g'ug'h'k'p'c'n'g'z'co u' 'cpf l'qt' r tq'lgew'r tqx'k'f g'c'ng'ct'p'k'pi 'g'x'c'w'cv'k'p' 'qh'y g'eqwtug' 'cpf 'r tqi tco 'v' 'f' g'v'g'to k'p'g'uwf gp'v'ng'ct'p'k'pi " q'w'eqo gu'cu'r t'guet'k'd'g'f 'd { 'g'cej 'eqwtug.'ewtlew'w' . 'cpf 'cf x'ku'qt { 'eqo o k'v'g'g'k'p'r w'0'K'ku" ko r qt'v'p'v'v'q'r tqx'k'f g'ö'ec'r u'q'p'gö'g'z'r g't'k'p'eg'u'k'p'ercu'ugu'v'q'g'pu'w'g'l'q'd't'g'c'f k'p'g'u'u'w'r qp'eqo r ng'v'k'p' " qh'y g'ewtlew'w' "cpf 'r tqi tco 0' "

**3. Students will have the skills and knowledge necessary to maintain, advance or change their employment or occupation."**

V'gej p'lec'n'r tqi tco 'r g'ht'qto c'peg'ku'o g'cu'w'g'f 'c'p'p'w'c'm { 'd'cu'g'f 'q'p'uk'z' 'eq't'g'k'p'f k'ec'v'qtu'cu'k'f g'p'v'k'k'g'f " k'p'v'j g'E'c't'n'R'g't'n'k'p'u'I t'cp'v'H'w'p'f '\*u'c'v'k'u'k'u'ht'qo 'M'c'p'uc'u'D'q'c't'f 'q'h'T'g'i g'p'u' 'cpf 'M'c'p'uc'u' F'g'r c't'vo g'p'v'q'h'N'c'd'q't-0'C'm'f'c'v'r t'g'ug'p'v'g'f 't'g'r t'g'ug'p'v'FY 20170'

- 1) Technical Skill Attainment:** Uwf gpv'cw'k'p'o gpv'qh'ej c'ng'pi kpi 'ect'ggt' 'cpf " v'gej p'lec'n'un'k'n'r tq'h'el'g'p'el'gu.'k'penf kpi 'uwf gpv'cej k'x'g'o g'p'v'q'p'v'gej p'lec'n' cu'gu'uo g'p'u.'y cv'ct'g'c'ni p'g'f 'y k'j 'k'p'f w'ut { /t'ge'q'i p'k' g'f 'u'c'p'f c't'f u.'k'h'c'x'k'c'k'd'ng' " cpf 'cr r tq'r t'k'v'g'0'0 g'cu'w'g'u'c'p { 'uwf gpv'k'f g'p'v'k'k'g'f 'cu'c'eq'p'eg'p't'c'v'q't 'y j q' " c'w'g'o r v'g'f 'c'v'gej p'lec'n'un'k'n'cu'gu'uo g'p'v'0'H'q't'g'z'co r ng.'q'x'g't'y g'r cu'v'ce'c'f go k'e' { g'ct.'y g' " r cu'u't'c'v'g'ht 'y g'RP 'r tqi tco 'ku'322' "cpf 'y g'r cu'u't'c'v'g'ht 'y g'TP 'r tqi tco 'ku'q'x'g't'; 2' 0'

	Passed Technical Assessment"	Attempted Technical Assessment	%"
2017	364"	367"	97.9%"

**2) Credential, Certificate or Degree:** Uwf gpv'cwckpo gpv'qh'cp'lpf wux {/tgeqi pl gf " etgf gpv'cn'c"egt wkecvg."qt" c" f gi tgg00 gcuwt gu'eqpegpvcvtu'y j q" gctpgf "cp"cy ctf "cpf " ctg" P Q "NQPI GT" gptqmgf "lp" r quugeqpf ct { "gf wecvkqp0

	Awarded a credential, certification or degree"	Students no longer enrolled in post-secondary	%"
2017	4"	7"	86.3%"

**3) Student Retention and Transfer:** Uwf gpv'tgvpv'kp'lp' r quugeqpf ct { "gf wecvkqp"qt" v'cpuhgt "q" c" dceecr'wgcvg' f gi tgg' r tqi tco 00 gcuwt gu'eqpegpvcvtu'y j q' y' gtg' gptqmgf " f w'kpi "y' g' tgr qt v'kpi " { gct "cpf "tgo ckpgf "lp" r quugeqpf ct { "gf wecvkqp"y' g' hqmy kpi "hcn0' Cml'uwf gpw'y j q" gctpgf "cp"cy ctf "qt" etgf gpv'cn'ctg" TGO QXGF "htqo "y' g" cpcn{uku0

	Enrolled at GCCC or transferred to 4 year"	Enrolled in program the previous fall	%"
2017	62"	83"	65.6%"

**4) Student Placement:** Uwf gpv'r r'ego gpv'lp'o k'kct { "ugt xleg"qt" cr r tgp'v'eguj k' r tqi tco u" qt' r r'ego gpv'qt' t'gvpv'kp'lp' go r m { o gpv'lp'nmf kpi " r r'ego gpv'lp'j' ki j "unkm" j ki j "y ci g." qt" j' ki j " f go cpf "qeerw cvkqpu"qt" r tq' hgu'kqpu00 gcuwt gu' r r'ego gpv'qh'cm'eqpegpvcvtu" y j q" ctg" P Q "NQPI GT" gptqmgf "lp" r quugeqpf ct { "gf wecvkqp0Qpn{ 'uwf gpw'y j q" j' cxg" eqo r mgvf . "gctpgf "cp"lpf wux { "tgeqi pl gf "etgf gpv'cn'qt" j' cxg" f tqr r gf "qw'qh" r quugeqpf ct { "gf wecvkqp"ctg'lp'nmf gf "lp" y' g" cpcn{uku0

	Students placed or retained in employment in 2nd quarter following exit"	Students no longer enrolled in post-secondary education	%"
2017	9: "	7"	82.1%"

**5) Nontraditional Participation:** Uwf gpv'r ct vkr cvkqp "kp'ectgg't'cpf "v'ej p'ecn'gf wecvkqp" r tqi tco u"j cv'rgcf "v"go r m{ o gpv'kp'pqpvtcf kkp'cn'h'gnf u0O gcuwt gu'cm'r ct vkr cpv'cpf " eqpegp'tcvqtu" gptqmgf "kp'i gpf gt "w'pf gttgr tgugpvgf "r tqi tco u0'

*This would include the following:"*

*/" Females in John Deere, Agriculture, Criminal Justice, Firefighting, Automotive, and Welding"*

*/" Males in Nursing and Cosmetology"*

	Students from underrepresented gender" groups"	Total participants in" programs	%"
2017	49; "	6: 8"	57.4%"

**6) Nontraditional Completion:** Uwf gpv'eqo r m'v'kp"qh'ectgg't'cpf "v'ej p'ecn'gf wecvkqp" r tqi tco u"j cv'rgcf "v"go r m{ o gpv'kp'pqpvtcf kkp'cn'h'gnf u0O gcuwt gu'cm'pqpvtcf kkp'cn' eqpegp'tcvqtu'y j q" gctpgf "cp"cy ctf "kp" c"i gpf gt "w'pf gttgr tgugpvgf "r tqi tco 0'

Underrepresented gender completing" program"	Total students" completing program	%"
--	---------------------------------------	----

2017	35"	328"	12.3%"
------	-----	------	--------

I ctf gp'Ekv{ 'Eqmgi g'cnuq'r tqxkf gu'uwf gpw'vj g'qr r qtwpkv{ 'v'o clpvkp."cf xcpeg."qt"ej cpi g" vj gk"go r mq{o gpv'qt"qeev cvkqp"vj tqwi j "qwt"Cf wv'Ngctplpi 'Egpvgt0""

Uwf gpw'j cxg'vj g'qr r qtwpkv{ 'v'ej cpi g'vj gk"go r mq{o gpv'ucwu'd { 'gctplpi "c'I GF ." gptqmkpi "k'f gxgmr o gpvcn'encuugu'vj cv'r tgr ctg'vj go "hqt"eqmgi g/ngxgrly qtm"cpf " gptqmkpi "k"qvj gt"eqmgi g/ngxgr'encuugu0"Vj g'Cf wv'Ngctplpi 'Egpvgt'ugtxgf "784"uwf gpw" f wtkpi "vj g'r tgxkqu" { gct0""

Dmgy "ku'c"lwo o ct { 'qh'gf wecvkqpcn'i clpu'cpf "go r mq{o gpv'cf xcpego gpv'vj tqwi j "vj g'Cf wv' Ngctplpi 'Egpvgt<

Vqvcn'Uwf gpw'Ugtxgf "	784"
Gpvtgf "Go r mq{o gpv"	99"
Tgvckpgf "TK r tqxgf "Go r mq{o gpv"	482"
Gpvtgf "Rquwgeqpf ct { 'Gf wecvkqp"	47"

**Incidental Information  
October 2018**

Uwf gpvUwr r qtvUgtxlegu

I EEE "VTIQ"Uwf gpvUwr r qtvUgtxlegu'j grf "c"eqmgi g'hck"qp"Ugr vgo dgt "350"  
Vy grkg'f hht gpv'hqwt/ { gct'kpvkwwkqpu'y gtg'tgr tgugpvf "cpf"cr r tqzko cvgn' 'y ktv/hxg"uwf gpvu"  
cwgpf gf "y g'gxgp0""UUU'cnuq"j cf "c"Vwqt0qo 'y qtmij qr 'y g'hqmij kpi "Vj wtuf c{ 'y cv'y cu'y gm'  
cwgpf gf 0""Rtqi tco 'uchh'ctg'r rppkpi "cpqy gt'y qtmij qr 'hqt"Vj wtuf c{ . "Qevdgt"6. "v"eqo r n' 'y kj "  
f kt gevqp'kp'y g'J ki j gt'Gf wecvqp"Qr r qtwpk{ "Cevhqt"VTIQ'r tqi tco u'vq'gf wecv'r ctvek cpv"qp"  
hpcpekrihktce{0""Uchh'o go dgtu'ctg'cj gcf "qp'tgetwklpi "cpf "qpn' 'pggf "v'tgetwkv'y ktv/vy q"  
uwf gpw'd{ "Cwi wuv"53. "423; 0"

Uwf gpvJ gcnj "Ugtxlegu"

Ugr vgo dgt "Gxgpw"

0J qo g'Uy ggv'J qo g0'o"j qo gukenpguu"  
0Megr "K'Uchg0/'uchgv' 'kr u( 'j gcnj { 'tgrvqpuj kr u"  
Ncwpej gf <Qprkp'NO U' Dmqf dqtpg'Rcvj qi gp"go r m{ gg'tcklpi "

Qevdgt "gxgpw"

"F qo gwke "Xkqmppeg"Cy ctgpguu'O qpj "  
0Vj gug'J cpf u'F qp0'J wt0"  
0Hcegu'qh'Cdweg0"  
Tgf 'Hrci 'Eco r cki p"

HpcpekriCkf "

Qwt "qhhekn'4237'5/ { gct'f ghcwn'tcvg'eco g'lp'cv'808' "0"Vj ku'tcvg'ku'f qy p'htqo 'y g'qhhekn'4236'5"  
{ gct'f ghcwn'tcvg'qh': 0' 0"

Cf o kuukpu"

Cwgpf kpi 'Eqmgi g'Rrppkpi 'Eqphgt gpegu"\*ERE0u+cetquu'y g'ucv0'I EEE "cpf 'I ctf gp'Ekv{ 'J ki j "  
Uej qqn'j quvgf "Vwuf c{ . "Qevdgt"40""J cf "j ki j 'uej qqn'htqo 'F ggthgrf . "J qre0o d'cpf 'Ucqvq'Eq."  
cu'y gm'cu'y g'Lwplqt'cpf "Ugpkqtu'htqo 'I EJ U'cwgpf kpi 0"

Cnuq"j quvgf . 'y kj 'y g'tgi kwtct0'qhheg. "qw"cppwcn'ucv'eqphgt gpeg"j gtg'lp'I ctf gp'Ekv{ . "  
Ugr vgo dgt "48/4: 0""Dtqwi j v'kp'cdqw'382'cf o kuukpu'cpf 'tgi kwtct'r tqhgukpcnu'htqo 'cetquu'y g'  
ucv0'  
"

Uctv'kpi "vq"j quv'r k| c'r ctv'gu'lp'cm'qh'qwt'ugt'xleg'ctgc"j ki j 'uej qqn'htq'cm'ugpkqtu0""Vj ku'i kxgu'wu"  
y j g'qr r qtwpkv{ "vq'xkuk'cdqw'y j g'qr r qtwpkk'gu'cxckrdng'cv'I EEE 'y kj "cm'qh'y j'ugpkqtu#"

I gctkpi 'wr 'hqt'Cr r n' "Mcpucu'lpk'k'v'xg'htq'y g'o qpj 'qh'Qevdgt0""Y g'y km'y qtmij kj 'I EJ U'lp"  
y j gkt'eqo r wgt 'rd. 'j gr kpi "uwf gpw0'eqo r rvg'cr r r'ecv'kpu0"  
Eqmgi g'Cr r r'ecv'k'p'O qpj 'ku'c'ucv'g/y kf g'lpk'k'v'xg'lp'r ctv'p'gtuj kr 'y kj 'y g'Co gtkecp"  
Eqmgi g'Cr r r'ecv'k'p'Eco r cki p. 'clo kpi "vq'r tqxkf g'o qtg'uwf gpw'y kj 'y g'qr r qtwpkv{ "vq"  
cr r n' "vq'eqmgi g. 'y j kg'ur gekhecm{ 'hqewulpi "qp'iqy /kpeqo g'cpf 'htuv/i gp'gtcv'k'p'uwf gpw0"  
"

Cf o kuukpu'cnuq'r tgugpvf 'y j g'Rrppkpi 'hqt'Eqmgi g'r tgugpv'k'p'cv'y g'J CNQ'Rctgpv'Y qtmij qr . "  
Ucwtf c{ . "Ugr vgo dgt "440"  
Rtgr ctkpi 'hqt'Gzr r'ctv'k'p'F c{ . "P qx"370"  
"

Cf xkukpi "

Y qtnkpi "qp"i gwkpi "uqo g"vtckpki u"ugv'ht"vj g"ugo guvgt0'

Y qtnkpi "vj g'F tqr Qw'F gevge'xg'crgt'v'u{ uqo 'vq'ej gen'vj g'ucwu'qh'uwf gpw'lp'vj gk't'ercuugu0'  
Vj ku'cmqy u'cf xkuqtu'vq'lpvgt'xgpg'tki j v'cy c{ 'kh'y g'ugg'vj cv'i tcf gu'qt'cwgp'f cpeg'ctg'urk' r kpi 0"

Kpust wevkp"

I gpgt'cn'Gf wevkp"

Vj g'eqo o wplecvkpu'f kxkukp'ku'r ctvlekr cvkpi 'kp'vj g'hqmqy kpi "vj kpi u<"

- 30 Ej tku'cpf "Ugy 'y knir ctvlekr cvg'lp'MEQI 'tgr t'gugpvkpi 'Gpi rkuj 'cpf 'Nkgt'cwt'g0'
- 40 Y g'ctg'dwu{'tgxkukpi "o cuvgt'uj gmu'cpf "ctg'cj gcf "qh'uej gf wrg0'Kdgrkxg'y g'y kni'j cxg"  
o cuvgtu'ht'g'xgt { "eqwtug'eqo r r'gv'gf "dghqt'g'vj g'f gcf r'kpg0'
- 50 Y g'j' cxg'l'wuv'h'pkuj gf "UR3; "eqwtug'uej gf wrg'cpf 'y g'x'g'c'nt'gcf { "f'gv'to kpgf "UW3; "vj qwi j "  
k'kup'ø'f w'g'l'wuv' { g'0'0 ctni'j cu'dggp'co c'j kpi 'kp'i gwkpi "g'xgt { vj kpi "eqqtf kpcv'gf #"
- 60 H'cewn' { "ctg'gpi ci gf "kp'f k'ht'g'p'v'v'f r gu'qh'r tq'huuk'q'pcn'f g'xg'nr o gpv'cpf "cuukukpi 'y kj "  
xct'k'wu'eqo o kv'ggu'qp'eco r wu0'

Uqel'cn'Uel'gpeg"

O cp { "eco r wu'qti c'pk' cvkpu'cpf "q'wuk'f g'ucngj q'f gtu'ctg'y qtnkpi "vqi g'vj gt "vq'dtkpi "c'URQV"  
Xkukp'Uet'gpgkpi "vq'eco r wu0'

I EEE'ø' Eco r wu'En'q'ugv.'RVM' 'vj g'CP U'p'wtukpi "qti c'pk' cvk'p'cpf "Vtkuj 'O kngt 'y kni'dg'qti c'pk' kpi "  
cpf "ej gen'kpi "uwf gpw'ø'xkukp'j' g'g'qp'eco r wu0'"Vj g'g'y kni'dg'v'y q't'q'wp'f u'qh'ej genu<Q'pg'ht' "  
uwf gpv'cvj r'gv'u'cpf "q'pg'ht'cni'uwf gpw0'

Vj g'CP U'i tqw "cpf "Vtkuj 'O kngt 'y kni'dg'i gwkpi "vtckp'gf "vq'wug'vj g'URQV'ej gen'gtu'ht'qo "T wu'ugni'  
Ej k'f "F g'xg'nr o gpv'E'gpvgt. 'y j q'y cu'i t'cpv'gf "5'URQV'ej gen'gtu'd { "vj g'P q'qp'N'k'pu'E'nd0'"Y g'  
y kni'cnuq'dg'dq'ttqy kpi "c'6'j' "URQV'ej gen'gt'ht'qo "Rct'gpw'Cu'Vg'cej gtu0'P q'qp'N'k'pu'y kni'vj gp. "qp"  
t'geqo o gp'f cvk'p. 'r tq'x'k'f g'g' { g'gz'co u'cpf "dcule'ht'co g'cpf "r'gp'ugu'vq'vj q'ug'uwf gpw'y j q'p'ggf "  
vj go 0'

C'i t'cpv'j cu'dggp'y tkw'gp'vq'j' gr 'y kj "equu'qh'vtckpki "r'gcf gtu'j k' + "cpf "vj g't'g'uv'qh'vj g'o q'pg { 'y kni'  
dg'r w'vqy ctf u'I EEE'ø' Eco r wu'En'q'ugv'r w'ej c'ukpi "c'URQV'ej gen'gt '\*&.222+0'Vj g'lp'v'gp'v'k'p'ku"  
vq'y t'kg'q'vj gt 'i t'cpw'vq'r w'ej cug'vj ku. 'uk'peg'y g'j' cxg'p'qy "g'uv'cd'rkuj gf "c't'gr'cv'k'p'uj k' 'y kj 'vj g'  
P q'qp'N'k'pu0'

I EEE 'uwf gpw'ctg'ht'o kpi "c'Eqo r w'gt'Uel'gpeg'E'nd'vj ku'ugo guvgt0'Vj gk't'o kuuk'p'ku'vq'r tq'x'k'f g"  
I EEE 'uwf gpw'y kj "vj g'qr r qt'w'pk'v' { "vq'g'zr'rt'g'5/F 'r t'k'p'v'kpi. "c'r r 'f g'xg'nr o gpv'cpf "q'vj gt 'r tq'l'geu'  
kp'q'tf gt "vq'd'w'k'f "un'k'ni'g'x'gnu'cpf "g'zr' c'p'f "ect'ggt'qr r qt'w'pk'k'gu0'Vj g { "o g'g'v'y g'gm' { "qp'O q'pf c { "  
g'x'g'p'kpi "cv'7'r o "kp'CECF "34330'

V'gej p'le'cn'Gf wevk'p'cpf "Y qtn'ht'eg'F g'xg'nr o gpv"

Vj g'V'gej "Gf 'f kxkuk'p'eq'p'v'p'w'gu'vq'o q'x'g'ht'y ctf "kp'c'xct'k'v' { "qh'y c { u0'Vj g'k'pust'we'v'qtu'j' cxg"  
ug'w'gf "kp'v'vj gk't'q'w'k'p'gu'cpf "ctg'h'q'ewukpi "qp'gp'j' c'pekpi "vj g's'w'ek'v' { "qh'v'g'cej kpi "cpf 'r'g'ct'p'kpi "vj cv'  
q'ee'w'qp'c'f c'k' { "dcu'ku'lp'vj g'encu'ut'q'qo u0'H'cewn' { "eq'p'v'p'w'g'vq'uv'gr 'w' 'cpf 'f'q'y j' cv'x'g't'ku"  
p'ge'gu'uct { "vq'o c'ng'vj g'f c'k' { "qr g't'cv'k'p'u'j' cr r gp0' Cf f'k'k'q'p'cm' . 'vj g't'get'w'k'p' { "gh'ht'w'ht'V'gej "Gf "  
r tqi t'co u'eq'p'v'p'w'gu'vq'r tqi t'guu'cpf "k'p'et'g'cug'cu'vj g'y g'gm'i q'd { 0'"

J g'tg'ctg'uqo g'qh'vj g'q'vj gt'j' ki j ni j w'ht'qo "V'gej "Gf "cpf "Y qtn'ht'eg'F g'xg'nr o gpv<"

Vgej pkeci'Gf wecvkqp<

- Cpkc cri'Uelgpeg<"
  - Ft0Crgzcpf gt'cpf 'j ku'O gcvu'lwfi kpi 'vgco 'eqpvkpwg'vq'tgr t gupv'vj g'eqmgi g'kp'vj g' j ki j guv'r quikdrg'y c { 'cu'vj g { 'eqo r gvg'ci ckpuv'qvj gt 'eqmgi gu'cpf 'wpxgtukkgu'cpf " v { r kcm { 'r gthqto 'xgt { . 'xgt { 'y gnt0'I EEE'cnuq'j quvfg 'c'xgt { 'rcti g'o gcv'lwfi kpi " gxgpv'vj cv'y gpv'xgt { 'y gnt0'Mwf qu'vq'F t0E rkp'v'Crgezcpf gt0' "
- P vtukpi "
  - Y j krg'ceetgf kcvkqp'cev'xkkgu'ctg'pqv'cu'ogzekkpi o'cu'qvj gt'pgy uy qtvj { 'gxgpw. " vj g'P vtukpi 'hcewm { 'cpf 'cf o kpkwtcvkqp'ctg'y qtnkpi 'j ctf 'qp'wr eqo kpi " ceetgf kcvkqp'ukg'xkuku'cpf 'f qewo gpvcvkap0'" "
- Equo gvqmi { "
  - Vj g'o quv'tgegpv'vgukpi 'f cvc'uj qy u'vj cv'42'qh'46'uwf gpw'r cuugf 'cm'vj tgg'r ctvu" uweeguuhwm { 0'Vj g'qvj gt 'hqw'uwf gpw'ctg'y qtnkpi "qp'uweeguuhwifeqo r rgvkapi " "
  - Vj g'r tqi tco 'j cu'qpg'ogvej gt'kp'v'ckkpi o'vj ku'hcrt0'" "
- Etko kpci'lwukg"
  - Rctv'ekr cvgf 'kp'vj g'hcml'cf xkuqt { 'eqo o kwgg'o ggvkpi 0'J ki j rki j u'cpf 'o kpwgu'qh' vj g'o ggvkpi 'ctg'cxckrdng'wr qp'tgs wgu0'
  - Vj g'htuv'eqo r gvkkqp'ht'vj g'I EEE'uj qqv'kpi 'vgco 'ku'uej gf wrgf 'ht'Qevqdtg'3: /43" kp'Ngga'Uwo o kv'O Q0'\*T gi kqp'5'eqo r gvkkqp+0'I EEE'j cu'c'j kuqt { 'qh'gzegmgpv' r gthqto cpeg'cv'vj ku'gxgpv0' "
- Y grf kpi "
  - Tgetv'kpi 'cv'hqecnj ki j 'uej qqnu0'
  - Eqpf wev'kpi 'eqo r tgj gpukxg'Rtqi tco 'Tgxky 0'Hktuv'f tch'v' cu'dggp'uwdo kwgf 'y kj " xgt { 'ko r tguukxg'f cvc'cpf 'kphqto cvkqp0' "
- GO VIRctco gf le"
  - Qh'hekm { 'j ktgf 'c'pgy 'hwn'vko g'kputwevt'vj ku'y ggn0'" "
  - Co dwrpeg'dc { 'j cu'dggp'hwm { 'tgpqxcvfg . 'kpenw' kpi 'tgo qxcn'qh'cm'qrf 'gs wkr o gpv' cpf 'cm'pgy 'r ckpv' "
  - F gxgmr o gpv'qh'c'ouko 'j qwugo'ku'v'pf gty c { 'kp'vj g'co dwrpeg'dc { 0'Vj ku'y km' cm'vy 'uwf gpw'kp'GO VIRctco gf le.'Etlo kpci'lwukg.'cpf 'Hktg'Uelgpeg'v'w'w'k' g" vj ku'ur ceg'ht'tgcn'rhg'uko wrcv'kpu'kp'ugctej 'cpf 'tguewg0' "
- Lqj p'F ggtg"
  - J grf 'vj g'hcml'cf xkuqt { 'Eqo o kwgg'o ggvkpi 0'J ki j rki j u'cpf 'o kpwgu'ctg'cxckrdng' wr qp'tgs wgu0'" "
  - Ces vktgf 'c'xcp'ht'w'w'k' cvkqp'kp'twppkpi 'gtt'cpf u'cpf 'ht'r ctvu'cpf 'uwr r rkgu0' "
  - Dqvj 'hcewm { 'o go dgtu'ur gpv'c'y ggm'kp'k'qy c'ht'Lqj p'F ggtg'tckkpi " "
- Ci tlewnwtg"
  - Uwf gpw'htqo 'vj g'I EEE'Ci 'r tqi tco 'r ctv'ekr cvgf 'kp'J ctxguv'F c { u'cv'Rn { o gm' Uej qqit0'Vj ku'y cu'c'dki 'gxgpv'cpf 'vj g'uwf gpw'r gthqto gf 'xgt { . 'xgt { 'y gnt0' "

Y qtnhqtteg'F gxgnr o gpv<

- F go qrkxqp'cpf 'tgo qxcn'qh'co o qpk'gs wkr o gpv'ku'eqo r rvg'kp'vj g'Lcto gt'Cppgz'Dif i 0"
- Cmt'grv'gf "gs wkr o gpv'y cu'uj kr r gf "v'CTn'pucu'kp"Ugr vgo dgt0"
- F kuewukqpu'y kj "Ugdcqctf "Hqf u'ctg'r tqi tgu'kpi 0"Encu'gult'ckl'kpi u'y qwf "dg'j grf "
- dgi kppkpi "pgz'v'wo o gt"\*423; +"
- F kuewukqpu'qp'c"hcen'O cngtu"Ur ceg'eqpv'kwg"

J wo cp'Tguqwtegu"

J wo cp'Tguqwtegu'y km'dgi kp'kpv'tx'kgy u'hqt'vj g'Cecf go le'cf xluqt.'Eqqt'f kpcvqt'qh'Qprkpg" Ugtx'legu."cpf 'vj g'xct'kqu'qprkpg'cf l'wpev'k'pust'wexqt'r qu'k'k'p'f'w'k'pi 'vj g'o qpvj "qh'Qevdgt0'Qw" r r'p'ku'v'q'j c'x'g'c'm'q'h'v'j g'ug'r qu'k'k'p'f'k'ng'f'd{ 'vj g'gp'f'qh'Qevdgt0' "

Y kj 'vj g'j gr 'ht'qo 'F'c'm'u.'kp'Rc{tqm'y g'y km'q'ti c'pk'g'c'Dk'qo g'w'le'U'et'g'g'k'pi "qp'Qevdgt'3; 'hqt' c'm'go r m'g'g'u'v'q'c'ng'cf x'c'p'w'c'i g'q'h'c'v'p'q'equ'v'q'vj go 0'Rct'v'k'o g'go r m'g'g'u'c'p'f'ur'q'w'ug'u'ec'p'c'nu'q' c'ng'cf x'c'p'w'c'i g'c'v'c'equ'v'q'h'&620' "

Eco r wu'Rqrleg"

Qp"Ugr vgo dgt'43.'Ej kgh'F q' l'gt'h'ce'k'k'c'v'g'f'c'uch'g'v'f' 'b' g'g'v'k'pi 'y' kj 'eco r wu'Dw'k'f'k'pi 'Go g'ti g'p'e{ " Ng'c'f'g'tu'\*DGN'0'E'w't'g'p'w'f'.' 'vj g't'g'c't'g'c'r r t'q'z'k'o c'v'g'n'f'72'x'q'n'p'v'g'g't'u'0'eco r wu'y k'f'g'0'Vj g'DGN" Rt'q'i t'c'o 'ku'r'c't'v'q'h'v'j g'I c't'f'g'p'E'k'v'f' 'E'q'o o w'p'k'v'f' 'E'q'm'g'i g'Go g'ti g'p'e{ 'E'q'o o w'p'k'c'v'k'p'u'U'f' u'g'o . " y j k'ej 'y' c'u'c'f'q'r'v'g'f' 'k'p'42360'k'p' 'vj g'g'x'g'p'v'q'h'c'p'go g'ti g'p'e{ . 'DGN'x'q'n'p'v'g'g't'u'k'p'g'c'ej 'd'w'k'f'k'pi 'y' km' t'g'eg'k'g'0't'g'c'i'v'k'o g'o'k'p'h'q't'o c'v'k'p'.' y j k'ej 'ku'v'j g'p't'g'r'c'f'g'f' 'v'q'u'w'f'g'p'u.' h'c'e'w'w'f' 'c'p'f' 'u'c'h'f'0'Vj k'u' eq'o o w'p'k'c'v'k'p' 'e'c'r'c'd'k'k'v'f' 'f'q'g'u'p'q'v't'g'r'c'eg'q'w'go g'ti g'p'e{ 'p'q'v'k'h'c'v'k'p' 'r' t'q'v'q'eq'f'0'Vj k'u'o q'p'v'j . " I E5'O g'f'k'c'y t'q'v'g'c' 'u'q't'f' 'j' k'j' r'k'j' v'k'pi 'vj g'DGN'Rt'q'i t'c'o 0' "

Eco r wu'Rqrleg'cpf 'T'g'uk'f'g'p'v'k'c'i'N'k'g'r'g't'u'q'p'p'g'n'y' km'd'g'eq'p'f'w'v'k'pi 'c'h'k'g'f't'k'n'k'p'c'm'I' EEE" j'q'w'k'pi 'c't'g'c'u'0'Vj g'f't'k'n'y' km'eq'o o g'p'eg'k'p'vj g'c'h'g't'p'q'q'p'qp'Qevdgt'320'c'm'u'w'f'g'p'u'r' t'g'ug'p'v'c'v' vj g'v'k'o g'q'h'v'j g'f't'k'n'b' w'u'v'r'c't'v'k'k'c'v'g'0'Qw't'i' q'c'n'y' k'j' 'vj' k'u'uch'g'v'f' 'g'x'g'p'v'k'u'v'q'g'p'u'w't'g'c'm'u'w'f'g'p'u' n'p'q'y' 'y' j' g't'g'v'j g'f'g'uk'i'p'c'v'g'f' 't'c'm'f' 'r'q'k'p'u'c't'g'c'p'f' 'v'q'ej'g'e'n'y'j g'v'c'w'u'q'h'c'm'f'c'r't'o u'0' "

Rc{tqm'""

F w'k'pi 'vj g'o qpvj "qh'Ugr vgo dgt<

- Rt'g'r'c't'c'v'k'p'c'p'f' 'p'q'v'k'h'c'v'k'p'u'h'q't'I' t'q'w' 'J' g'e'n'j' 'k'p'u'w't'c'p'eg'Q'r'g'p'G'p't'q'm'o'g'p'v'
  - o DEDU'I t'q'w' 'E'q'p'u'w'c'p'v'i' c'x'g'r' t'g'ug'p'v'c'v'k'p'v'q'k'p'v'g't'g'v'g'f' "go r m'g'g'u"
- C'p'c'n'f'g'f' 'H'c'e'w'w'f' 'Q'x'g't'm'q'c'f' 'c'i' t'g'g'o'g'p'u"
- E'q'o r'g'v'g'f' 'r' t'q'eg'u'g'u'h'q't'j' g'e'n'j' 'k'p'u'w't'c'p'eg' 't'c'v'g' 'e'j' c'p'i'g'u'k'p'J' T'E'q'm'g'c'i'w'g"
- Q't'i'c'p'k'g'f' 'vj g'o qpvj n'f' 'U'g'e'v'k'p'347'k'p'h'q't'o c'v'k'p'c'p'f' 'c'r' r'q'k'p'o'g'p'u'h'q't'q'w't'p'g'y' "go r m'g'g'u"
- Rt'q'eg'u'g'f' 'y' q'p'g'y' "go r m'g'g'u."y' q'r' t'q'o q'v'k'p'u."c'p'f' 'vj' t'g'g't'g'uk'i'p'c'v'k'p'u"
- Rt'q'eg'u'g'f' 'y' q't'g'i'w'c't'r'c'f' 't'q'm'i'h'q't'Ugr vgo dgt'32'c'p'f' 'y' q't'g'i'w'c't'r'c'f' 't'q'm'i'h'q't'Ugr vgo dgt' 47'h'q't'c'v'q'c'n'q'h'5: 4'go r m'g'g'u"

Dwukp'guu'Qh'leg"

Ugr vgo dgt'46'v'j' y' cu'v'j g'ht'u'v'f'c'f' "qh'h'c'm'i'423: "f'k'ud'w't'ugo'g'p'v'h'q't'h'k'p'c'p'ek'n'c'k'f'0'c'h'g't' 'vj' g'ht'u'v'y'g'g'n'f' q'h'f'k'ud'w't'ugo'g'p'v'c'k'f' 'r'q'u'v'g'f' 'v'q'u'w'f'g'p'v'c'ee'q'w'p'u'k'p'e'n'f'g'<

" Rgm' " " " &3.262.567"

" UGQI "" " " &""66.835"



" Nqcpu" " " &""557.636"  
 " I EEE'uej qrcuj kr u"" " &""57;.634"  
 " Gpf qy o gpv'uej qrcuj kr u"" &""; 8.24: "  
 " DCC'uej qrcuj kr u"" " &""427.39: "  
 " Uchh'Y ckxgtu"" " &""45.33; "  
 " F guki pcvgf 'Uej qrcuj kr u"" &""387.: 52"  
 "

688'tghw'pf 'ej gemi'y gtg'y tkwgp'vq'uwf gpw'hqt'c'vqrci'qh'&&77.628"

"

(Published in the Garden City Telegram on the 6<sup>th</sup> day of October, 2018)

**Resolution No. 2746-2018**

**A RESOLUTION OF THE GOVERNING BODY OF THE CITY OF GARDEN CITY, KANSAS DETERMINING THAT THE CITY IS CONSIDERING ESTABLISHING A RURAL HOUSING INCENTIVE DISTRICT WITHIN THE CITY AND ADOPTING A PLAN FOR THE DEVELOPMENT OF HOUSING AND PUBLIC FACILITIES IN SUCH PROPOSED DISTRICT; ESTABLISHING THE DATE AND TIME OF A PUBLIC HEARING ON SUCH MATTER, AND PROVIDING FOR THE GIVING OF NOTICE OF SUCH PUBLIC HEARING. (HAMPTONS ADDITION PHASE TWO)**

**WHEREAS**, K.S.A. 12-5241 *et seq.* (the Act) authorizes any city incorporated in accordance with the laws of the state of Kansas (the State) with a population of less than 60,000 located in a county with a population of less than 80,000, to designate rural housing incentive districts within such city; and

**WHEREAS**, prior to such designation the governing body of such city shall conduct a housing needs analysis to determine what, if any, housing needs exist within its community; and

**WHEREAS**, after conducting such analysis, the governing body of such city may adopt a resolution making certain findings regarding the establishment of a rural housing incentive district and providing legal description of property to be contained therein; and

**WHEREAS**, after publishing such resolution, the governing body of such city shall send a copy thereof to the Secretary of Commerce of the State (the Secretary) requesting that the Secretary agree with the finding contained in such resolution; and

**WHEREAS**, if the Secretary agrees with such findings, such city may proceed with the establishment of a rural housing incentive district within such city and adopt a plan for the development or redevelopment of housing and public facilities in the proposed district; and

**WHEREAS**, the City of Garden City, Kansas (the City) has an estimated population of approximately 30,948, is located in Finney County, Kansas, which has an estimated population of approximately 41,940, and therefore constitutes a City as said term is defined in the Act; and

**WHEREAS**, the Governing Body of the City has performed a Housing Needs Analysis updated February, 2015 (the Analysis), a copy of which is on file in the office of the City Clerk, and

**WHEREAS**, the Governing Body of the City has heretofore adopted Resolution No.2442-2011 which made certain findings relating to the need for financial incentives for the construction of quality housing within the City, declared it advisable to establish a Rural Housing Incentive District pursuant to the Act and authorized the submission of such Resolution and a Housing Needs Analysis to the Kansas Department of Commerce in accordance with the provisions of the Act; and

**WHEREAS**, the Secretary of the Kansas Department of Commerce, pursuant to a letter dated April 16, 2013 authorized the City to proceed with the establishment of a Rural Housing Incentive District pursuant to the Act (the District); and

**WHEREAS**, the City has caused to be prepared a plan for the development or redevelopment of housing and public facilities in the proposed District in accordance with the provisions of the Act (the Plan); and

**WHEREAS**, the Plan includes:

1. The legal description and map required by subsection (a) of K.S.A. 12-5245;
2. The existing assessed valuation of the real estate in the proposed District listing the land and improvement values separately;
3. A list of the names and addresses of the owners of record of all real estate parcels within the proposed District;
4. A description of the housing and public facilities project or projects that are proposed to be constructed or improved in the District, and the location thereof;
5. A listing of the names, addresses and specific interests in real estate in the proposed District of the developers responsible for development of the housing and public facilities in the proposed District;
6. The contractual assurances, if any, the Governing Body has received from such developers, guaranteeing the financial feasibility of specific housing tax incentive projects in the proposed District;
7. A comprehensive analysis of the feasibility of providing housing tax incentives in the proposed District as provided in the Act, which shows the public benefits derived from such District will exceed the costs and that the income therefrom, together with all public and private sources of funding, will be sufficient to pay for the public improvements that may be undertaken in such District, and

**WHEREAS**, the Governing Body of the City proposes to continue proceedings necessary to create a Rural Housing Incentive District, in accordance with the provisions of the Act, and adopt the Plan, by the calling of a public hearing on such matters.

**THEREFORE BE IT RESOLVED** by the Governing Body of the City of Garden City, Kansas as follows:

**Section 1. Proposed Rural Housing Incentive District.** The Governing Body hereby declares intent to establish within the City a Rural Housing Incentive District. The District is proposed to be formed within the boundaries of the real estate legally described in *Exhibit A* attached herein, and shown on the map depicting the existing parcels of land attached herein as *Exhibit B*. A list of the names and addresses of the owners of record of all real estate parcels within the proposed District and the existing assessed valuation of said real estate, listing the land improvement values separately, is attached hereto as *Exhibit C*.

**Section 2. Proposed Plan.** The Governing Body hereby further declares intent to adopt the Plan in substantially the form presented to the Governing Body on this date. A copy of the Plan shall be filed in the office of the City Clerk and be available for public inspection during normal business hours. A description of the housing and public facilities projects that are proposed to be constructed or improved in the proposed District, and the location thereof are described in *Exhibit D* attached hereto. A summary

of the contractual assurances by the developer and the comprehensive feasibility analysis is contained in **Exhibit E** attached hereto.

**Section 3. Public Hearing.** Notice is hereby given that a public hearing will be held by the Governing Body of the City to consider the establishment of the District and adoption of the Plan on November 6, 2018, at the City Commission Meeting Room, City Administrative Building, 301 N. 8<sup>th</sup> Street, Garden City, Kansas 67846; the public hearing to commence at 1:30 p.m. or as soon thereafter as the Governing Body can hear the matter. At the public hearing, the Governing Body will receive public comment on such matters, and may, after the conclusion of such public hearing, consider the findings necessary for establishment of the District and adoption of the Plan, all pursuant to the Act.

**Section 4. Notice of Public Hearing.** The City Clerk is hereby authorized and directed to provide for notice of the public hearing by taking the following actions;

1. A certified copy of this resolution shall be delivered to:
  - A. The Board of County Commissions of Finney County, Kansas;
  - B. The Board of Education of U.S.D. 457;
  - C. The Board of Trustees of Garden City Community College; and
  - D. The Planning Commission of the City.
2. This Resolution, specifically including **Exhibit A** thru **E** attached hereto, shall be published at least once in the official newspaper of the City not less than one week or more than two weeks preceding the date of the public hearing.

**Section 5. Further Action.** The Mayor, City Manager, City Clerk and the officials and employees of the City, including the City Attorney, are hereby further authorized and directed to take such other actions as may be appropriate or desirable to accomplish the purposes of this Resolution.

**Section 6. Effective Date.** This Resolution shall take effect after its adoption by the Governing Body.

**ADOPTED** by the Governing Body of the City of Garden City, Kansas on October 2, 2018.



Roy Cessna, Mayor



Celyn N. Hurtado, City Clerk



**CERTIFICATE**

I hereby certify that the above and foregoing is a true and correct copy of the Resolution No. 2746-2018 adopted by the Governing Body of the City on October 2, 2018 as the same appear of record in my office.

DATED: October 2, 2018

Celyn N. Hurtado by Jaced Smith

Celyn N. Hurtado, City Clerk



**EXHIBIT A**

**LEGAL DESCRIPTION OF PROPOSED RURAL HOUSING INCENTIVE DISTRICT BOUNDARIES FOR  
HAMPTONS ADDITION PHASE TWO**

A Tract of Land located in the Southeast Quarter of Section 4, Township 24 South, Range 32 West of the 6th P.M., Garden City, Finney County, Kansas more particularly described as follows:

Beginning at the Northwest corner of said Southeast Quarter of Section 4 being a found 5/8" R-bar, Lowry; thence South 88° 09' 13" East on the North line of said Southeast Quarter of Section 4 a distance of 1,983.17 feet;

thence South 00° 39' 43" West on the West lines of several Tracts of Land a distance of 1,320.36 feet;

thence South 88° 18' 11" East on the South line of a Tract of Land a distance of 409.20 feet;

thence South 00° 39' 46" West on the West line of The Hampton's Phase One a distance of 192.51 feet;

thence South 60° 48' 31" East on the South line of The Hampton's Phase One a distance of 163.99 feet;

thence on the Jennie Barker Road Right of Way line on a non-tangential curve to the right having a delta angle of 52° 16' 50", a radius of 560.00 feet, an arc length of 510.98 feet, a chord length of 493.44 feet, and a chord bearing of South 55° 17' 07" West;

thence continuing on said Jennie Barker Road Right of Way line with a reverse curve to the left having a delta angle of 27° 42' 32", a radius of 640.00 feet, an arc length of 309.51 feet, a chord length of 306.50 feet, and a chord bearing of South 67° 33' 50" West;

thence North 36° 18' 45" West on the Northeast line of Russell Child Development Center Addition a distance of 230.16 feet;

thence on the Northwest line of said Russell Child Development Center on a non-tangential curve to the right having a delta angle of 45° 05' 58", a radius of 640.00 feet, an arc length of 503.77 feet, a chord length of 490.86 feet, and a chord bearing of South 65° 18' 56" West;

thence on the Southwest line of said Russell Child Development Center South 01° 38' 50" West a distance of 180.09 feet;

thence North 88° 18' 58" West on the North line of O'Brate Addition a distance of 90.31 feet;

thence South 01° 41' 05" West a distance of 65.08 feet;

thence South 88° 18' 21" East on the West line of said O'Brate Addition a distance of 90.32 feet;

thence South 01° 37' 17" West continuing on the West line a distance of 314.93 feet;

thence North 88° 20' 45" West on the North Mary Street Right of Way Line a distance of 150.67 feet;

thence North 01° 41' 05" East on the East line of the Spanier Tract a distance of 380.22 feet;

thence North 88° 21' 49" West on the North line of said Spanier Tract, Spanier Addition and a Tract of Land a distance of 822.87 feet;

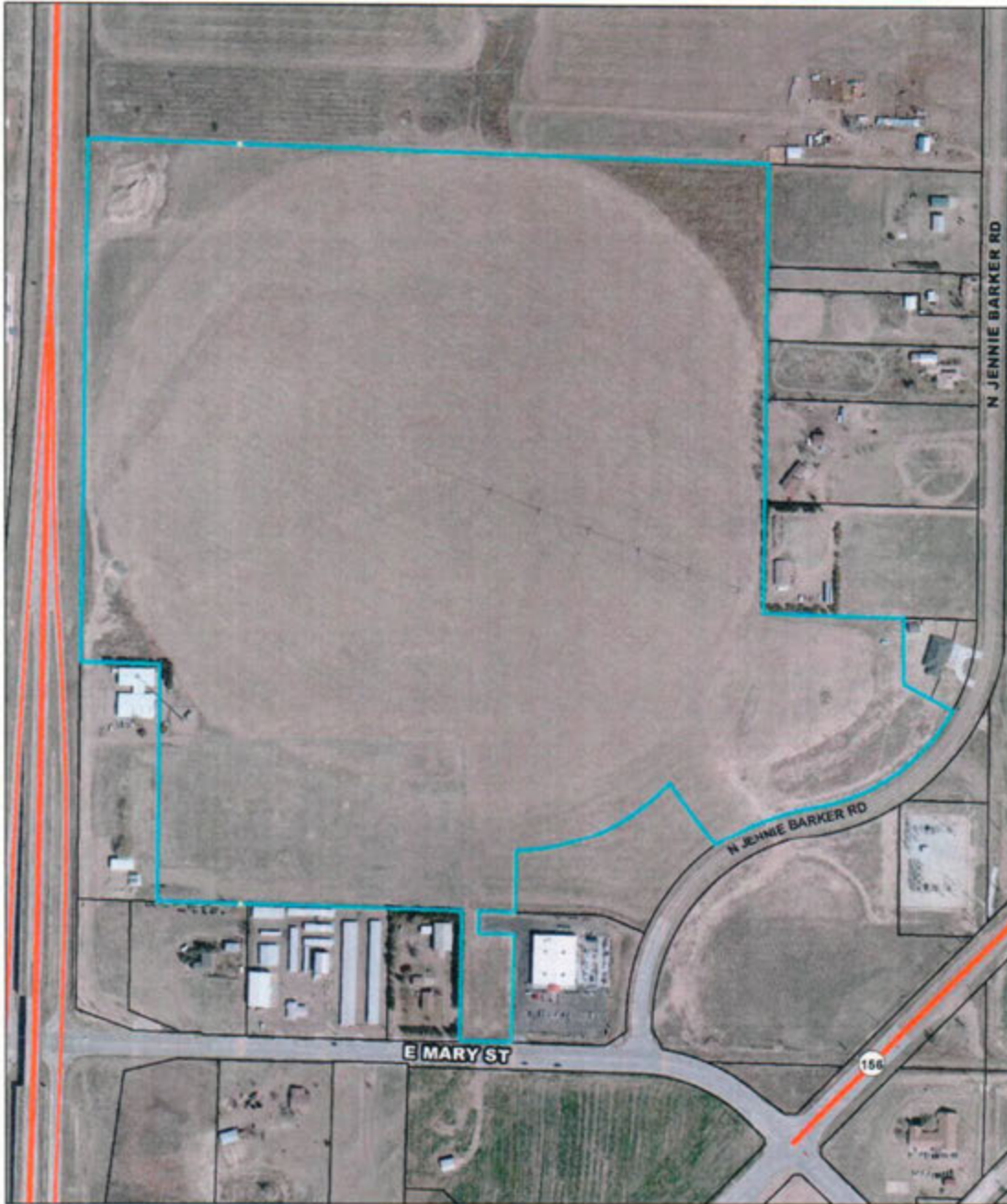
thence North 00° 49' 33" East on the East line of the SCO, Inc. Tract a distance of 699.94 feet;

thence North 88° 22' 05" West on the North line of said SCO, Inc. Tract and a Tract of Land a distance of 299.91 feet;

thence North 00° 49' 30" East on the West line of said Southeast Quarter of Section 4 a distance of 1,530.03 feet to the point of beginning, containing an area of 99.05 acres, more or less.

EXHIBIT B

MAP OF PROPOSED RURAL HOUSING INCENTIVE DISTRICT BOUNDARIES  
FOR HAMPTONS ADDITION PHASE TWO



## EXHIBIT C

### LIST OF NAMES AND ADDRESSES OF THE OWNERS OF RECORD OF ALL REAL ESTATE PARCELS WITHIN THE PROPOSED DISTRICT

O'Brate Realty, LLC  
P.O. Box 399  
GARDEN CITY, KS 67846

## EXHIBIT D

### DESCRIPTION OF THE HOUSING AND PUBLIC FACILITIES PROJECT OR PROJECTS THAT ARE PROPOSED TO BE CONSTRUCTED OR IMPROVED IN THE PROPOSED RURAL HOUSING INCENTIVE DISTRICT

#### **Housing Facilities**

The Hamptons Addition project will contain two hundred and fifty-five (255) single family home lots. The homes will have garages to provide for parking.

#### **Public Facilities**

Public improvements will include construction of infrastructure improvements located within the boundaries of the District, including street, water, sanitary sewer, and electric improvements. Infrastructure improvements will be constructed concurrently with the project.

## EXHIBIT E

### SUMMARY OF THE CONTRACTUAL ASSURANCES BY THE DEVELOPER AND OF THE COMPREHENSIVE FEASIBILITY ANALYSIS

#### ***Contractual Assurances***

The Governing Body of the City of Garden City will enter into a development agreement with Bernard Chappel. This agreement, as supplemented and amended, shall include the project construction schedule, a description of projects to be constructed, financial obligations of the developer and financial and administrative support from the City of Garden City.

#### ***Feasibility Study***

The City conducted a study to determine whether the public benefits derived from the rebate would be sufficient to pay for the public improvements to be undertaken in the District. The analysis estimates the property tax revenues that will be generated from the Development, less existing property taxes to determine the revenue stream available to support the costs of the public infrastructure. The estimates indicate that the revenue realized from the project would be adequate to pay the costs of the public infrastructure.



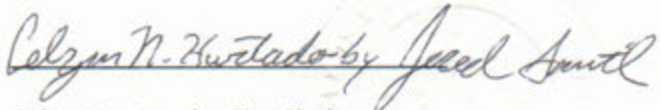
CERTIFICATE OF DELIVERY AND PUBLICATION

STATE OF KANSAS     )  
  ) §:  
COUNTY OF FINNEY    )

The undersigned, City Clerk of the City of Garden City, Kansas (the City), does hereby certify, as follows:

- (a) On 10-3, 2018, I caused a certified copy of Resolution No. 2746-2018 with **Exhibits A** thru **E** attached (the Resolution), to be delivered to the following:
  - 1) The Board of County Commissioners of Finney County, Kansas;
  - 2) The Board of Education of U.S.D. 457;
  - 3) The Board of Trustees of Garden City Community College; and
  - 4) The Planning Commission of the City.
- (b) I caused a copy of the Resolution to be published one time in **The Garden City Telegram**, the official newspaper of the City, on 10-6, 2018, which date was not less than one week nor more than two weeks preceding the date fixed for the public hearing. A true copy of the affidavit of publication of the Resolution is attached to this Certificate.

WITNESS my hand and seal on 10-3, 2018.

  
Celyn N. Hurtado, City Clerk

Garden City Community College Performance Report AY 2017					AY 2017 FTE: 1,613			
Contact: Ryan Ruda		Phone and email: 620-276-9597; ryan.ruda@gcccks.edu			Date: 7/16/2018			
Garden City Community College	Foresight Goals	3 yr History	AY 2017" (Summer 2016," Fall 2016, Spring 2017)"		AY 2018" (Summer 2017," Fall 2017, Spring 2018)"		AY 2019" (Summer 2018," Fall 2018, Spring 2019)"	
			Kpukwkwqpcn' " Rgthqto cpeg" Qweqo g'		Kpukwkwqpcn' " Rgthqto cpeg" Qweqo g'		Kpukwkwqpcn' " Rgthqto cpeg" Qweqo g'	
1 Kpetgcug'ucvukhcevt { 'eqo r ngvqp'qh' etgf kv'j qwtu'ht' r cuv'cpf 'ewttgpv.' cevxg'cpf 'j qpqtcdn' f'kuej cti gf " xgvgtcp'"	3"	35/360 6: ; " 36/370 599" 37/380 : 7" Dcugrkg/539"	478	↑				
2 Kpetgcug'P wo dgt'qh'egt'whecvgu'cpf' f gi tgg'cy ctf gf 0'	3"	42350 6: : " 42360 737" 42370 726" Dcugrkg/724"	474	↓				
3 Kpetgcug'y' g'y tkwgp'eqo o wplecvkqp' unkm'u'qh'uwf gpw'cu'gxkf gpegf 'd { " kpukwkwqpcn'cuuguo gp0"	4"	4235/360 2" 4236/370 : 0: " 4237/380 : 0 6" Dcugrkg0 : 0 3"	8.83	↑				
4 Kpetgcug'Rgtegpv'qh'uwf gpw'y j q" eqo r ngv'tgo gf kn'Gpi rkuj '2; 3'y kj " \$E\$'qt'dgwt'cpf 'uweeguuhwm' " eqo r ngv'eqmgi g/ngxgn'Gpi rkuj "323" y kj '\$E\$'qt'dgwt'y kj kp'3' { gct0'	3"	4234/350 79 B23'*78' +' 4235/360 32: B88'*87' +' 4236/370 334 B95'*87' +' Dcugrkg0 499 1662'*85' +'	73.5% (136/185)	↑				
5 Kpetgcug'ucvukhcevt { 'eqo r ngvqp'qh' etgf kv'j qwtu'kp'j { dtkf . f'kuepeg'cpf " qprkg'eqwtugu"	3"	34/350 : .762" 35/360 34.63; " 36/370 3: .6: 7" Dcugrkg0 35.36: "	20,567	↑				
6 Kpetgcug'5/ { gct'i tcf wcvkp'tcv'ht' hktuv'ko g. hwn'ko g. wpf gti tcf wcvg' f gi tgg'uggn'kpi . 'eqmgi g'tgcf { 'uwf gpv' eqj qt0'	3"	42320 98 B74'*72' +' 42330 ; 81454'*6306' +' 42340 3234: ; '*560' +' Dcugrkg0 495 1895'*6208' +'	43.1% (93/216)	↑				

## Garden City Community College Performance Report AY 2017

### Indicator 1: Increase satisfactory completion of credit hours for past and current, active and honorably discharged veteran students

**Description:** "I EEE'ku'tgeqi pl gf 'cu'c'o kxct { 'H'kgpf n' 'kpu'kwkqp'd { 'I OOLqdu'I EEE'y kn'kpetgcug'uweeguihw'leqo r r'g'v'k'p'q'h'x'g'v'g't'p'u'w'f'g'p'u'cu'o'g'c'u'w'g'f'd { 'etgf k'j' q'w'u'eqo r r'g'v'g'f'c'p'p'w'c'm'f'0'D { 'k'p'et'g'c'uk'p'i' 'x'g'v'g't'c'p'u'w'f'g'p'v'et'g'f'k'j' q'w' 'eqo r r'g'v'k'p'p' 'k'p'w't'p'y' k'u'y' kn'r' t'q'f' w'eg'c'o' q't'g'v't'c'k'p'g'f' 'y' q't'n'h'q't'eg'h'q't' 'M'c'p'uc'u'c'p'f' 'r'g'c'f' 'v'q' go r m { c'd'k'k'f'0'Y' k'j' 'y' g'k'p'et'g'c'ug'f' 'p'w'o' d'g't' 'q'h'x'g'v'g't'c'p'u'y' j' q'y' k'n'd'g' 'r'g'c'x'k'p'i' 'y' g'o' k'x'c't' { 'q'x'g't' 'y' g'p'g'z'v' 'u'g'x'g't'c'n' { 'g'c't'u' 'k'w'k'u'y' g'k'p'v'g'p'v'q'h'I' EEE'v'q' 'e'q'p'p'g'ev'x'g'v'g't'c'p'u'v'q' 'y' q't'n'h'q't'eg'v't'c'k'p'k'p'i' 'c'p'f' 'g'f' w'ec'v'k'p'v'q' 'c'u'k'u'0'"

**Outcome/Results:** "69: 'etgf k'j' q'w'u'j' c'x'g'd'g'g'p'u'w'ee'g'ui'hw'm'f' 'eqo r r'g'v'g'f' 'd' { 'r' c'u'v' 'e'w't'g'p'v' 'c'e'v'k'g' 'c'p'f' 'j' q'p'q't'c'd'n'f' 'f' k'ue'j' c't'i' g'f' 'x'g'v'g't'c'p'u'w'f'g'p'u'0' I EEE'j' c'u'd'g'g'p'y' q't'n'k'p'i' 'v'q' 'k'p'et'g'c'ug'q'w' 't'g'et'w'k'o' g'p'v'c'p'f' 't'g'v'g'p'v'k'p'v'q'h'x'g'v'g't'c'p'u'w'f'g'p'u'0'V'j' g' 'e'q'm'g'i' g'j' c'u'k'p'x'g'v'g'f' 'k'p' 'r' w'w'k'p'i' 'u'g't'x'k'eg'u'k'p' 'r' n'c'eg'y' j' k'ej' 'j' c'u' 'h'g'f' 'v'q' 'd'g'k'p'i' " t'g'eq'i' p'l'k'f' g'f' 'c'u'c' 'O' k'x'c't' { 'H' 'k'g'p'f' n' 'k'p'u'k'w'k'q'p'0'V'j' g'u'g' 'u'g't'x'k'eg'u'k'p'e'n'w'f' g'y' q't'n'k'p'i' 'v'q' 'f' g'uk'i' p'c'v'g'x'g'v'g't'c'p'u'k'p' 'q'w' 'u'w'f'g'p'v'k'p'h'q't'o' c'v'k'p' 'u'f' 'u'g'o' 'o' q't'g' 'e'q'p'ek'ug'n'f' 'c'p'f' 'r' w'w'k'p'i' " u't'c'v'g'i' k'g'u'k'p' 'r' n'c'eg'y' k'j' 'c'f' x'k'u'q't'u' 'h'q't' 'o' q't'g' 'k'p'v'g'p'v'k'p'c'n'k'p'v'g't'x'k'g'y' k'p'i' 'q'h'x'g'v'g't'c'p'u'w'f'g'p'u'0'V'j' g' 'h'k'p'c'p'ek'r'c'k'f' 'q'h'h'k'g'c'u'k'u'u'y' k'j' 'f'k't'g'ev'k'p'i' 'u'g't'x'k'eg'u'v'q' 'x'g'v'g't'c'p'u'v'q' 'i' g'v' 'v'j' g'o' 'e'q'p'p'g'ev'g'f' 'v'q' 'h'k'p'c'p'ek'r'c'c'u'k'u'c'p'eg'q'r' r' q't'w'p'k'k'g'u'0'"

### Indicator 2: Increase number of certificates and degrees awarded.

**Description:** "V'j' k'u'k'p'et'g'c'ug'k'u'd'c'ug'f' 'q'p' 'y' g'r' t'q'l'g'ev'g'f' '5' / { g'c't' 'c'x'g't'c'i' g' 'q'x'g't' 'd'c'ug'n'k'p'g' 'r' t'q'x'k'f' k'p'i' 'c'p' 'c'e'ew't'c'v'g'r' k'ew't'g'q'h'q'w't' 'c'y' c't'f' g'f' 'f' g'i' t'g'g'u'0' "V'j' g' 'E'q'm'g'i' g'y' k'n'i' o' g'c'u'w'g' 'y' g'p'w'o' d'g't' 'q'h'f' g'i' t'g'g'u'le'g't' 'w'h'ec'v'g'u'c'y' c't'f' g'f' '0' 'k'w'k'u' 'k'o' r' q't'c'p'v' 'h'q't' 'u'w'f'g'p'u'v'q' 'eqo r r'g'v'g' 'y' g'k't' 'c'ec'f' g'o' k'e' 'l'q'w't'p'g' { 'y' k'j' 'c' 'e't'g'f' g'p'v'k'c'n' 'g'ur' g'ek'm'f' 'k'p' 'y' g' 'v'g'ej' p'le'c'n'f' 'c'p'f' 'y' q't'n'h'q't'eg' 'r' t'q'i' t'c'o' u'y' j' g't'g'o' c'p' { 'q'h' 'y' g' 'e't'g'f' g'p'v'k'c'n' 'c't'g' 'k'p'f' w'w't' { 't'g'eq'i' p'l'k'f' g'f' 'c'p'f' 'o' c' { 'd'g' 'c' 'v'g't'o' k'p'c'n'f' g'i' t'g'g' 'h'q't' 'r' c't' 'k'ew'r'e't' 'r' t'q'h'g'u'k'q'p'u'0'Y' g' 'f' g'uk't'g' 'v'q' 'k'p'et'g'c'ug' 'y' g' 'e't'g'f' g'p'v'k'c'n' 'v'q' 'r' t'q'x'k'f' g'c' 'd'g'w'g't' 'e'j' c'p'eg' 'q'h' 'u'w'ee'g'u'k'p' 'y' g'y' q't'n'r' n'c'eg' 'c'p'f' 'h'q't' 'v't'c'p'u'h'g't' 'v'q' 'q'y' g't' 'r' q'u'w'eg'q'p'f' c't' { 'k'p'u'k'w'k'q'p'u'c'u'y' g'n'f'c'u'f'f' t'g'u'k'p'i' 'y' g'i' q'c'n'k'f' g'p'v'k'k'g'f' 'y' k'j' k'p' " H'q't'g'uk'j' v'42420'"

**Outcome/Results:** "696'eg't'w'h'ec'v'g'u'c'p'f' 'f' g'i' t'g'g'u'y' g't'g'c'y' c't'f' g'f' "

Y'j' k'g'y' g'f'k'f' 'p'q'v'k'p'et'g'c'ug'k'p' 'y' k'u'k'p'f' l'ec'v'q't' 'y' g' 'e'q'm'g'i' g'k'u' 'o' c'n'k'p'i' 'g'h'q't' u'v'q' 'k'p'et'g'c'ug' 'y' g'p'w'o' d'g't' 'q'h' 't'g'x'g't'g' 'v't'c'p'u'h'g't' 'c'i' t'g'g'o' g'p'u'y' k'j' '6' / { g'c't' 'r' c't'v'p'g't' 'k'p'u'k'w'k'q'p'u'0' "V'j' k'u'y' k'n'i'c'u'k'u'k'p' 'k'p'et'g'c'uk'p'i' 'y' g'p'w'o' d'g't' 'q'h' 'e'g't'w'h'ec'v'g' 'c'p'f' 'f' g'i' t'g'g'u'c'y' c't'f' g'f' '0' 'C'f'f' k'k'q'p'c'm'f' . 'y' g'c't'g'y' q't'n'k'p'i' 'y' k'j' 'q'w' 'v'g'ej' p'le'c'n'r' t'q'i' t'c'o' u'v'q' 'f' g'v'g't'o' k'p'g'o' g'c'u'w't'g'u' 'h'q't' " k'p'et'g'c'uk'p'i' 'y' g'c'y' c't'g'p'g'u'u' 'q'h'c'y' c't'f' u'k'p' 'e'g't'w'h'ec'v'g' 'r' t'q'i' t'c'o' u'0' "V'j' g' 'e'q'm'g'i' g'k'u'c'n'q' 't'g'x'k'g'y' k'p'i' 'd'g'u'v' 'r' t'c'e'v'k'eg'u'c'p'f' 'u'v'g'r' u'v'q' 'e'q'p'w'ev' 'h'q't'o' g't' 'p'q'p' 'e'q'o' r' r'g'v'g't' 'u'w'f'g'p'u'v'q' 'j' g'n' " h'c'ek'k'x'c'v'g' 'y' g'k't'g'w't'p'k'p'i' 'v'q' 'e'q'm'g'i' g' 'h'q't' 'f' g'i' t'g'g' 'e'q'o' r' r'g'v'k'p'0' ""

### Indicator 3: Increase the written communication skills of students as evidenced by institutional assessment.

**Description:** "k'p'4236/37. 'I EEE'g'o' d'c't'n'g'f' 'q'p' 'e'j' c'p'i' k'p'i' 'j' q'y' 'u'w'f'g'p'v' 'u'k'n'u'y' g't'g' 'c'u'g'u'g'f' '0' 'V'j' t'q'w'i' j' 'y' k'u'r' t'q'eg'u'u' 'h'g'c't'p'k'p'i' 'q'w'eq'o' g'u' 'h'q't' 'u'w'f'g'p'u'c'v'f' EEE' 'y' g't'g' " o' q'f' k'h'k'f' 'y' k'j' 'y' t'k'w'g'p' 'e'q'o' o' w'p'le'c'v'k'q'p' 'd'g'k'p'i' 'c'u'g'u'g'f' 'c'p'p'w'c'm'f' '0' 'C'p' 'k'p'v'g't'p'c'n'f'c'u'g'u'g'o' g'p'v'q'q'n'y' c'u'f' g'x'g'n'r' g'f' 'c'n'q'p'i' 'y' k'j' 'c' 't'w'd't'k' 'v'q' 'u'eq't'g'y' t'k'k'p'i' 'c'u'g'u'g'o' g'p'u'0' " G'x'g't' { 'h'g'ew't'g' 'd'c'ug'f' 'e'q'w't'g' 'k'u' 't'g's' w'k'g'f' 'v'q' 'u'w'd'o' k'v'c'y' t'k'k'p'i' 'c'u'k'i' p'o' g'p'v' 'h'q't' 't'g'x'k'g'y' 'd' { 'c' 'u'g'v'g'ev'g'f' 'r' c'p'g'n'q'h' 'h'k'g' 'h'c'ew'm'f' 'o' g'o' d'g't'u'c'p'f' 'w'ug'f' 'c'u'c'p' 'k'p'u'k'w'k'q'p'c'n'f' c'u'g'u'g'o' g'p'v'q'h'y' t'k'w'g'p' 'e'q'o' o' w'p'le'c'v'k'q'p'0' 'G'c'ej' 'y' t'k'k'p'i' 'u'c'o' r' n'g' 'k'u' 'u'w'd'o' k'w'g'f' 'v'q' 'y' g' 'c'u'g'u'g'o' g'p'v'g'c'o' 'c'p'f' 'c' 't'c'p'f' q'o' 'u'c'o' r' n'g' 'q'h' '322' 'c'u'k'i' p'o' g'p'u'c't'g' 'u'eq't'g'f' 'd'c'ug'f' 'q'p' 'y' g' " t'w'd't'k'0' 'V'j' g't'w'd't'k' 'k'u' 'q'p' 'c' '6' / r' q'k'p'v' 'N'k'ng't'v' 'u'ec'g' 't'c'p'i' k'p'i' 'h'q'q'o' 'o'f' q'g'u' 'p'q'v'o' g'g'v'g'z'r' g'ev'c'v'k'q'p'u'0' 'y' t'q'w'i' j' 'o'G'z'eg'g'f' u' 'G'z'r' g'ev'c'v'k'q'p'u'0' "V'j' g't'w'd't'k' 'g'x'c'n'w'c'v'g'u'y' t'k'k'p'i' " c'u'k'i' p'o' g'p'u' 'q'p' 'y' t'g'g'o' c'k'p' 'e't'k'g't'k'c' < 'u'g'p'v'g'p'eg' 'u't'w'ew't'g' 'e'q't'g'ev'p'g'u'u'c'p'f' 'e'q'p'v'g'p'v'c'w'f' k'g'p'eg'0' 'V'j' g' 'u'eq't'g' 'k'u'f' g'v'g't'o' k'p'g'f' 'h'q'q'o' 'y' g' 'u'w'o' 'q'h' 'y' t'g'g' 'k'p'f' k'k'f' w'c'n'f'et'k'g't'k'c' 'u'eq't'g'u' " v'q' 'f' g'v'g't'o' k'p'g' 'y' g' 'q'x'g't'c'm' 'u'eq't'g'0' 'V'j' g' 'u'eq't'k'p'i' 't'w'd't'k' 'k'u' 'q'p' 'c' '34' / r' q'k'p'v' 'u'ec'g' 'y' j' k'ej' 'y' c'u'f' g'x'g'n'r' g'f' 'k'p' 'e'q'q't'f' k'p'c'v'k'q'p' 'y' k'j' 'q'w' 'h'c'ew'm'f' 'c'p'f' 'y' g' 'J' 'N'E' 'c'u'g'u'g'o' g'p'v'g'c'o' '0' 'V'j' g' 'h'k'g' 'h'c'ew'm'f' 'k'p'f' k'k'f' w'c'm'f' 'u'eq't'g' 'y' g' '322' 'c'u'k'i' p'o' g'p'u'c'p'f' 'u'w'd'o' k'v'j' g'k't' 'u'eq't'g'u' 'y' j' g't'g'w' 'q'p' 'y' g'o' g'c'p' 'k'u'f' g'v'g't'o' k'p'g'f' '0' 'Q'w'eq'o' g'u'l't'g'u'w'u' 't'g'r' t'g'ug'p'v'j' g'o' g'c'p' 'q'h' " c'u'g'u'g'o' g'p'u' 'h'q'o' 'y' k'u' 'r' c'u'v'c'ec'f' g'o' k'e' " { g'c't'0' "

**Outcome/Results:** 0.5

Vj g'eqmgi g'j cu'eqpegtvgf "ghqtu'qxtg'yj g'rcuv'hw" { gctu'vq'go dfg 'y tkwgp'eqo o wplecvkqp'cuuguu gpv'lpv'eqwtugu0"Vj tqwi j 'y qtnly kj 'y g'J ki j gt'Ngctpkpi " Eqo o kulqp.'y g'eqmgi g'y tkwgp'eqo o wplecvkqp'eqo o kwgg'f gxmnr gf "c'twdtke'y j lej 'j cu'dggp'wugf 'vq'cuuguu'y tkwgp'eqo o wplecvkqp0"Rtqhgukqpcnlf gxmnr o gpv' crupi 'y kj 'y g'cf f kklqp'qh'c'y tkkpi 'egpvt'j cu'j gr gf 'lpukswkqpcrk g'y g'lo r qtwcpeg'qh'y tkwgp'eqo o wplecvkqp'unkm0"

**Indicator 4: Increase percent of students who complete remedial English 091 with a “C” or better and successfully complete college-level English 101 with a “C” or better within 1 year."**

**Description:** "I ctf gp'Ek' { 'Eqo o wpl' { 'Eqmgi g'y knlpetgcug'yj g'r gtegpv'qh'pqp/eqmgi g'tgcf { 'uwf gpv'uweeguuhwm' 'eqo r rnvkpi 'eqmgi g'rgxgn'ercuugu.'cpf 'r tqxkf g' qr r qt wpl' { 'hqt'cecf go le'uweegu0" Vj g'f gpqo kpcvt'lp'yj g'ecrewkqp'ku'yj g'pwo dgt'qh'uwwf gpw'y j q'ctg'gptqmgf 'lp'Gpi rkuj '323'cv'egt'whecvkqp'f cvg'cpf 'y j q' eqo r rvgf 'tgo gf knl'Gpi rkuj 'y kj 'c'hkpcnlf tcf g'qh'dE'ot'j' ki j gt'0Vj g'pwo gtcvt'tgr tgu'p'v'y qug'uwwf gpw'lp'yj g'f gpqo kpcvt'y j q'yj gp'uweeguuhwm' 'eqo r rvg'htu' eqmgi g'rgxgn'Gpi rkuj 'y kj 'c'hkpcnlf tcf g'qh'dE'ot'j' ki j gt'0'Vj ku'lpf kpcvt'y cu'ej qugp'lp'crki po gpv'y kj 'Hqtguk j v4242.'tgr tgu'p'v'pi 'qwt'eqo o ko gpv'vq' wpf gr tgr ctgf 'uwf gpw0"

**Outcome/Results:** 358B: 7'950' 'uweeguuhwm' 'eqo r rvgf "

Vj g'eqmgi g'ucy 'uki p'hecpv'lpetgcugu'lp'yj g'uweegu'vcvu'qh'uwwf gpw'y j q'eqo r rvgf 'tgo gf knl'cpf 'uweeguuhwm' 'eqo r rvgf 'y g'htu'eqmgi g'y tkkpi 'i cvy c' { 'eqwtug0" Vj g'lpetgcug'ku'f wg'lp'r ctv'vq'yj g'hcw' { au'tgeqo o gpf cvkqp'vq'ej cpi g'cml'tgo gf knl'eqwtugu'htqo 'j { dtkf 'vq'utlev' { 'hceg/vq/hceg0" Cmqcvkpi 'o qtg'vko g'lp'ercu'j cu' r tqxkf gf 'y g'lo r gwu'vq'lpetgcug'lpwv'wvqt'eggf dcm'ncpf 'uwf gpv'lpv'gtcevkqp0" Ceeqtf kpi n'f. 'y g'f gekukp'vq'cf f 'c'y tkkpi 'egpvt.'wch'gf 'd' { 'cp'Gpi rkuj 'lpwv'wvqt'cpf ' hqt'uwf gpv'wvqtu.'j cu'r tqxkf gf 'cf f kklqpcnlf guqwtegu'cpf 'lpetgcugf 'ceegu'vq'cuukv'cpeg'y kj 'y tkkpi 'unkm0"

**Indicator 5: Increase satisfactory completion of credit hours in hybrid, distance and online courses. "**

**Description:** "I EEE'y knlpetgcug'yj g'pwo dgt'qh'uwwf gpw'eqo r rnvkpi 'etgf k'j qwtu'yj tqwi j 'f kucpeg'gf wecvkqp'o qf crk' { 'y kj 'c'i tcf g'qh'dE'ot'j' dgwgt0" F kucpeg' gf wecvkqp'ku'eqo r tkugf 'qh'j { dtkf 'cpf 'f kucpeg'gf wecvkqp'qh'htkpi u0" I EEE'j cu'tcpukqpgf 'vq'c'pgy 'Ngctpkpi 'O cpci go gpv'U' { vgo . 'Ecpxcu.'y j lej 'y kn'cm'y " i tgcvt' hgz'kdk' { 'hqt'uwf gpv'gpi ci go gpv'lp'eqwtugu'cpf 'r tqi tco u'qh'htgf 'yj tqwi j 'f kucpeg'gf wecvkqp0" D' { 'lpetgcukpi 'eqo r rnvkqp.'y ku'lpf kpcvt'y kn'ur gek'hecm' { 'cf f tgu'v'y g'qr r qt wpl'kgu'cxck'rdng'vq'uwf gpw'yj tqwi j 'I EEE' 'cpf 'r tqxkf g'g'xkf gpeg'qh's wcrk' { 'lpwv'wvqt'cpf 'ugt'x'legu'cxck'rdng'yj tqwi j 'f kucpeg'o qf crk' { 0"

**Outcome/Results:** 42.789'etgf k'j qwtu'uweeguuhwm' 'eqo r rvgf "

I EEE'j cu'lpetgcugf 'o ctngv'kpi 'ghqtu'w'ht'f kucpeg'gf wecvkqp0" Vj g'eqmgi g'lpv'gi tcv'gf 'pgy 'uqhy ctg' \*F' tqr 'Qw'F gyev'xg+lpv'v'yj g'Ngctpkpi 'O cpci go gpv'U'qhy ctg' vq'cuukv'y kj 'tcentkpi 'hcw' /uwf gpv'lpv'gtcevkqp.'uwf gpv'tg'v'kqp'cpf 'qp'rkpg'uwf gpv'uweegu0" Vj g'uqhy ctg'p'q'v'k'gu'cf xluqtu'kh'uwwf gpw'ctg'p'q'v'cevk'gn' { 'gpi ci gf " lp'yj g'eqwtug.'gpcdrkpi 'r tqcevk'xg'eqo o wplecvkqp'cpf 'lpv'gt'x'gpv'kqp.'y j lej 'j cu'lpetgcugf 't'g'v'kqp0" Vj tqwi j 'lpetgcugf 'o ctngv'kpi 'cpf 'cy ctg'p'gu'cu'y gni'cu'gpj cpegf " t'g'v'kqp'utcv'gi kgu.'yj g'eqmgi g'j cu'g'zr g'k'gpegf "o gcuw'gf 'i c'ku'lp'uweeguuhw'eqo r rnvkqp'qh'etgf k'j qwtu'lp'f kucpeg'eqwtugu0"

**Indicator 6: Increase 3-year graduation rate for first-time, full-time, undergraduate, degree-seeking, college ready student cohort."**

**Description:** "I EEE'y knlpetgcug'yj g'r gtegpv'qh'uwwf gpw'y j q'i tcf wcv'y kj lp'372' " \*5' { gctu+'qh'vko g'htqo 'lp'k'kn'gptqmo gpv.'w'k'k' kpi 'y g'5' / { gct'i tcf wecvkqp'tcv'cu' ec'rew'v'gf 'd' { 'MDQT IMJ GF U' 'Uwwf gpw'y kn'dg'cf xkugf 'vq'eqo o k'v'q'c'r tqi tco 'qh'uwwf { 'cpf 'f gxmnr 'cp'gf wecvkqpcnlf r'p'y kj 'gf wecvkqpcnlf qcu0" Tuguctej 'uj qy u' yj cv'uwwf gpw'y j q'omp'y 'y j cv'y g' { 'y cp'v'y kn'j cxg'lpetgcugf 'ej cpegu'ht'eqo r rnvkqp'qh'c'egt'w'hecv'g'qt'cuuq'ek'v'gf gi tgg0"

**Outcome/Results:** 51438'650' "5' / { gct'i tcf wecvkqp'tcv'cu' "

F wtkpi 'yj g'r cu' { gct.'y g'eqmgi g'j cu'f gh'p'gf 'r tqi tco u.'f gxmnr gf 'ewt'lewno "o cr u'cpf 'crki pgf 'r tqi tco 'qweqo gu'vq'o qtg'gh'ev'x'gn' { 'cf xkug'cpf 'f k'ge'v'uwf gpw' lp'v'c'eqwtug'qh'uwwf { 0" Vj gug'gh'qtu.'lp'eqo d'lp'cv'kqp'y kj 'lpetgcugf 't'g'v'kqp'gh'qtu'd'q'nv'gt'gf 'd' { 'gctn' { 'cngt'v'uh'y ctg.'j cxg'lo r tqxgf 'cpf 'lpetgcugf 'uwf gpv' tcentkpi 'cpf 'o qpkqt'kpi 0" Vj ku'j cu'et'g'v'gf 'c'o qtg'eqm'cd'q'c'v'x'g'gh'qt'v'ht'cuuk'kpi 'uwf gpw'y kj 'o cv'le'w'v'kqp'vqy ctf u'f gi tgg'eqo r rnvkqp0"

# Job Description

## Garden City Community College Structured Compensation – Job Description

Prepared Sept. 21, 2010

**President**

Page 1

Department: Administration  
Reports to: Board of Trustees

Grade: 20  
Classification: 20

### Role:

The President serves as the sole employee of the Board of Trustees in meeting the college's objectives/Ends and carrying out the GCCC mission within the executive limitations specified by Policy Governance. The President directs overall operation of the college with the objective of ensuring financial stability commensurate with the best interests of students and employees; establishes short-term and long-term objectives, plans and policies; facilitates communication among stakeholders; and represents the college within the community, and across the service area, state and nation.

### Expectations:

The president is expected to serve as a visionary leader and decision maker, role model, educator and entrepreneurial thinker, employing and building a strong record of significant accomplishments in the following:

- Achieving the Ends specified in the GCCC Board of Trustees policy governance document
- Motivating, developing and maintaining a qualified faculty and staff
- Communicating the value and values of GCCC within and beyond the campus community
- Maintaining and improving the financial stability of the college
- Creating and maintaining an environment of openness, communication, transparency, and trust
- Meeting the college's planned growth and development objectives
- Initiating and maintaining partnerships essential to the college mission
- Keeping the Board of Trustees informed regarding key policy and operating issues
- Engaging the community in the college, and the college in the community

### Knowledge and Skills:

#### Experience:

- At least 10 years of relevant experience, preferably with operating knowledge of Policy Governance
- Demonstrated commitment to the values of teaching and learning as well as the community college mission
- Proven ability to serve as an ethical, adaptable, and creative leader and decision maker
- Proven ability to delegate both responsibility and authority

#### Education:

- Doctoral degree in relevant field

#### Interpersonal skills:

This leadership position involves extensive interaction with the entire college community and service area as well as community, business, and government leaders at all levels. It requires outstanding skills in speaking, writing, and interpersonal communication as well as the ability to inspire and motivate others to strive for and attain significant achievements.

Garden City Community College  
Structured Compensation – Job Description

Prepared Sept. 21, 2010

President

Page 2

Other skills:

Extensive knowledge of community college activities and policies with experience in leadership and management, fund-raising, and education/legislative issues and affairs.

Major Duties and Responsibilities:

- Develop basic objectives, policies, and operating plans of the college; submit these to the Board of Trustees for approval
- Ensure that adequate plans for future college growth and development are prepared, and periodically present such plans for general review and approval by the Board of Trustees
- Prescribe the specific limitations of authority of all college employees regarding policies, contractual commitments, expenditures, and personnel actions
- Review and approve the appointment, employment, transfer or termination of employees, and resolve any conflicts arising between operating groups, organizational units or other elements
- Analyze operating results of the college relative to the Ends, and ensure that appropriate steps are taken to achieve Ends and correct unsatisfactory conditions
- Represent the college in relationships with students, educational institutions, professional societies, business and industry, the community and service area, the state, and beyond
- Ensure college compliance with state and federal laws and regulations
- Ensure that college policies are uniformly understood and properly interpreted by employees
- Submit monitoring reports to the Board of Trustees on a timely basis
- Present proposed operating and capital expenditure budgets for review and approval by the Board of Trustees

**This job description is not a complete statement of all duties and responsibilities comprising this position.**